



— 2024 —

# DATA BOOK



GOODYEAR FAMILY OF BRANDS



# COOPER® TIRE TABLE OF CONTENTS

Drive Growth Through Product Screen Optimization.....	2
Reasons You Should Choose Cooper Tires .....	3
Cooper 45-Day Satisfaction Guarantee .....	4



Click on tire name to go directly to product page

## COMMUTER TOURING

Commuter Touring Product Line Chart.....	5
Commuter Touring Tire Selector Chart .....	6
Discoverer EnduraMax.....	7
ProControl .....	9
Discoverer SRX.....	11
Endeavor .....	13
Endeavor Plus.....	15
Discoverer SRX-LE.....	17

## PERFORMANCE

Performance Product Line Chart .....	19
Performance Tire Selector Chart .....	20
Cobra Instinct .....	21
Cooper Zeon RS3-G1 .....	23
Cobra Radial G/T.....	25
Discoverer CrossRange .....	27
Cooper Zeon CrossRange .....	27

## ALL-TERRAIN

All-Terrain Product Line Chart.....	28
All-Terrain Tire Selector Chart .....	29
Discoverer HT3 .....	30
Discoverer Road+Trail AT .....	32
Discoverer AT3 4S .....	34
Discoverer Stronghold AT.....	36
Discoverer AT3 LT .....	38
Discoverer AT3 XLT .....	38
Discoverer Rugged Trek.....	40
Discoverer S/T MAXX .....	42
Discoverer STT Pro .....	44
Evolution M/T .....	46

## WINTER

Winter Product Line Chart.....	48
Winter Tire Selector Chart.....	49
Discoverer Snow Claw.....	50
Discoverer True North.....	52
Evolution Winter .....	54
Cooper OE Fitments .....	56
Tire Fundamentals .....	57

# DRIVE GROWTH THROUGH PRODUCT SCREEN OPTIMIZATION

	COMMUTER TOURING		PERFORMANCE			ALL-TERRAIN			WINTER			
	TOURING	ALL WEATHER	SPORT TOURING	ULTRA HIGH	SUMMER	ON-ROAD	ON-/OFF-ROAD	OFF-ROAD	EXTREME OFF-ROAD	PERFORMANCE	COMMUTER TOURING	SUV/LIGHT TRUCK
PREMIUM	Assurance MaxTire®											
	Assurance ComfortDrive®	Assurance WeatherReady® 2 <sup>NEW</sup>	FootReady® <sup>NEW</sup>	Eagle Exhilarate®	Eagle® F1 SuperCar® 3	Wrangler® Steadfast HT™	Wrangler® All-Terrain Adventure with Kevlar®	Wrangler® Duratrac® RT <sup>NEW</sup>	Wrangler® Boulder MT® <sup>NEW</sup>	Ultra Grip® 3 <sup>NEW</sup>	WinterCommand® Ultra	
MID-UPPER	ProControl®	Discoverer® EnduraMax®										
	Assurance All Season		Eagle® Sport All-Season			Wrangler® Workhorse® HT	Wrangler® Workhorse® AT	Discoverer® RT <sup>NEW</sup>	Discoverer® S/T Max™		Winter Maxx® 2	Winter Maxx® S18
			Eagle® LS-2			Discoverer® HT3™	Discoverer® AT	Discoverer® RT <sup>NEW</sup>	Evolution® MT™	Ultra Grip® Series	Discoverer® True North™	Discoverer® Snow Claw™
MID-LOWER												
			Cobra® Radial 6/T™			Edge® HT	Edge AT®					
			Avenge® 6/T™*			Courser HXT™*	Courser Trail HD™*				Glacier Trax™*	Glacier MSR™*
ECONOMY												
OE												

Relative position of products on chart are not reflective of price positioning. <sup>NEW</sup> Represents products launched in the second half of 2023 and anticipated 2024 product launches. \* Mastercraft brand not sold in Canada. \*\* Available in Canada only.



DuPont™ and Kevlar® are trademarks or registered trademarks of E.I. du Pont de Nemours and Company, used under license by The Goodyear Tire & Rubber Company and affiliates. ©2024 The Goodyear Tire & Rubber Company. All rights reserved. Product Screen as of June 2024.

GOODYEAR FAMILY OF BRANDS





# REASONS you should choose COOPER® TIRES

---

As a trusted brand since 1914, we understand that the four tires on your vehicle are what keep you connected to the road, playing a crucial role in how your vehicle handles, and keeping you safe on your travels.



**A TRUSTED BRAND SINCE 1914** — Our focus is on making quality tires that will perform well and last for thousands of miles. Ira Cooper's creed says it all: "Good merchandise, fair play, and a square deal." This vision is what continues to drive the Cooper brand family of products.



**RIGHT FEATURES, RIGHT VALUE** — People want to be able to buy a good set of tires without being a tire expert or unnecessarily breaking the bank. Cooper tires are designed and engineered with just that in mind. All the latest features explained in a way everyone can understand.



**MADE TO LAST** — Whether you buy online or in store, all Cooper® Tires are backed by a standard **45-Day Satisfaction Guarantee**, which gives you up to 45 days to decide if you want to keep select tires or exchange them for a different set, helping to give you confidence on the road and a hassle-free experience.



**COMMITTED TO SAFETY** — Safety is our top priority. Visit [coopertire.com](http://coopertire.com) ([coopertire.ca](http://coopertire.ca)) and click on Safety for information on tire replacement, driving tips and proper tire maintenance.

# COOPER® TIRES 45-DAY SATISFACTION GUARANTEE

## Cooper 45-Day Satisfaction Guarantee

At Cooper, we stand behind the innovative technology we roll into our tires, and we think you'll be 100% satisfied with them. That's why we offer our 45-Day Satisfaction Guarantee, which gives you up to 45 days to decide if you want to keep select tires or exchange them for a different set of Cooper, Goodyear, Dunlop, Kelly or Mastercraft tires. Certain conditions and limitations apply.

Just bring your tires and original sales receipt to your local store within 45 days of your purchase and we'll take care of the rest. Quick note: We also share tire selections from Cooper, Dunlop Kelly and Mastercraft. Whether you buy online or in store, we can help you find tires with the 45-Day Satisfaction Guarantee.

### Eligible Tire Lines:

- Discoverer® EnduraMax®
- ProControl®
- Discoverer® SRX™
- CS5 Ultra Touring™
- CS5 Grand Touring™
- Endeavor®
- Endeavor Plus®
- Discoverer® SRX<sup>LE</sup>™
- Cobra Instinct®
- Cooper® Zeon RS3-G1™
- Cobra® Radial G/T™
- Discoverer® HT3
- Discoverer Road+Trail® AT
- Discoverer® Stronghold™ AT
- Discoverer® AT3<sup>4S</sup>™
- Discoverer® AT3<sup>LT</sup>™
- Discoverer® AT3<sup>XL</sup>™
- Discoverer® Rugged Trek®
- Discoverer® S/T MAXX
- Discoverer® STT Pro
- Cooper® Evolution® M/T
- Discoverer® Snow Claw®
- Discoverer® True North
- Cooper Evolution® Winter

## Limitations and Requirements

- Tires must be returned undamaged. Tires that are damaged due to misuse, road hazards, mechanical problems related to the vehicle, use in any racing-related activities or competitive events, or tires that are removed from the original vehicle are excluded from this trial period and exchanges do not apply.
- If the exchange is for a more expensive tire, you pay the difference (including sales tax). If the exchange is for a less expensive tire, you'll receive a refund for the difference. Mounting and balancing are included. Valve stems extra, if necessary.
- Exchanges are for another set of Cooper, Goodyear, Dunlop, Kelly or Mastercraft tires.
- Only the tires originally purchased are covered. The replacement tires are not covered by the 45-Day Satisfaction Guarantee.
- You must return to the location that sold the tires for the exchange.
- You must present the original sales receipt.
- If you have questions, contact the Goodyear Customer Assistance Center at 1-800-321-2136.

## Claim Processing Instructions for Dealers

- Mark the removal reason on the product adjustment claim form as "Cooper 45-Day Satisfaction Guarantee." If you use GBMS to input your adjustments, enter condition code GG followed by a space and "Cooper 45-Day Satisfaction Guarantee" for the tire condition.
- **IMPORTANT:** Record the date of the original tire purchase on the claim form.
- Return the tires to your designated Product Services Center with your next shipment of adjustment tires.
- For complete claim processing instructions, refer to the Cooper 45-Day Satisfaction Guarantee Product Service Bulletin on Tire-HQ™.
- If you have questions, contact the Goodyear Customer Assistance Center at 1-800-321-2136 U.S., 1-800-387-3288 Canada.



# COMMUTER TOURING



Discoverer®  
EnduraMax®

ProControl®

Discoverer®  
SRX™

Endeavor®

Endeavor  
Plus®

Discoverer®  
SRX<sup>LE</sup>™

# 2024 COOPER® COMMUTER TOURING TIRE SELECTOR CHART

	Passenger/CUV					
	Discoverer EnduraMax	ProControl	Discoverer SRX	Endeavor	Endeavor Plus	Discoverer SRX-LE
185/60R15				T		
185/65R15				H		
195/60R15				H		
195/65R15				H		
205/65R15				H		
215/70R15				H		
205/55R16		V		H		
205/60R16				V		
205/65R16		H		H		
205/70R16	H				H	
215/55R16				H		
215/60R16		V		V		
215/65R16					H	
215/70R16	H		H		H	
225/60R16				H		
225/65R16				H		
235/65R16					T	
235/70R16	H		T		T	
265/70R16			T		T	
205/50R17		V		V		
205/55R17		V				
215/45R17		W		V		
215/50R17		V		V		
215/55R17	V	V		V		
215/60R17	H				H	
215/65R17	H				T	
225/45R17		W		V		
225/50R17	V	V		V		
225/55R17	H	V		V		
225/60R17	H	V			H	
225/65R17	H	H			H	
235/50R17		V		V		
235/55R17	H	W			H	
235/60R17	H				H	
235/65R17	H	H			H	
245/65R17	H	H			T	
245/70R17		T	T		T	
255/65R17		T				
255/70R17			T			
265/65R17		H			T	
265/70R17		T	T		T	
215/55R18	H				H	
225/40R18		V				
225/45R18	V	W		V		
225/50R18		V		V		
225/55R18	H	H			H	

	Passenger/CUV					
	Discoverer EnduraMax	ProControl	Discoverer SRX	Endeavor	Endeavor Plus	Discoverer SRX-LE
225/60R18	H	H			H	
235/40R18		W				
235/45R18		V		V		
235/50R18	V	W			V	
235/55R18	V	V			V	
235/60R18	H	V			V	
235/65R18		V			H	
245/40R18		W				
245/45R18		V		V		
245/50R18		V				
245/60R18	H	H			H	
255/55R18			V			
255/65R18		H			H	
255/70R18			T			
265/60R18		H			T	
265/65R18		T	T		T	
265/70R18			T			
275/65R18		T	T		T	
225/45R19		W				
225/55R19	V	V			H	
235/40R19	V	V		V		
235/45R19		H				
235/50R19	H	V				
235/55R19	H	V			V	
245/40R19		W				
245/45R19		W				
245/55R19		H			H	
255/45R19		V				
255/50R19		V				H
255/55R19		V				
255/60R19			H		H	
235/55R20	H	V			H	
245/45R20		V				
245/50R20	V	V			V	
245/60R20		H				
255/45R20		V				
255/50R20		V			H	
255/55R20		V			H	
265/45R20		H				
265/50R20		V			T	
275/45R20		V				
275/50R20						H
275/55R20		H			H	
275/60R20		H	H		H	
275/50R22		H				
285/45R22		H			H	

Size chart includes active products only as of February 2024

60,000 mile / 96,000 km  
LIMITED TREADWEAR WARRANTY\*

# Discoverer® EnduraMax®

All-Weather

From city streets to gravel roads the **Discoverer EnduraMax** tire has the durability you need for whatever the road has in store.

- Rough road durable
- Smooth, quiet ride
- Enhanced weather traction



Limited Treadwear Warranty\*

45-DAY Test Drive\*

60,000 mile / 96,000 km



## Durable-Tread™ Technology

Helps to extend the life of your tire tread with ultra-durable materials that resist wear and tear from rough road conditions like gravel and uneven city streets, which can quickly wear out other tires.

## Quiet Tread

Quiet on the road, thanks to the unique tread pattern that helps minimize tire noise.

## Winter Grip™ Technology

Confidently tackle the changing seasons with sawtooth grooves to enhance snow traction and control in wintry conditions.

## EnduraGuard™ Design

A durable internal construction helps the tire keep its shape when driving over rough and uneven surfaces, giving you better contact with the road and achieving a full tire life through even wear.

## Armor Belt™ Technology

Extra strength steel belts, like the ones in our off-road tires, provide the tire strength to stand up to rough roads.



<sup>1</sup>The Three-Peak Mountain Snowflake Designation located on the sidewall of a tire indicates a tire that meets a snow traction standard set by FMVSS (Federal Motor Vehicle Safety Standards).

COMMUTER TOURING





# Discoverer® EnduraMax®

Size	Service Description	Load Range	Sidewall	Product Code	Material Number	Approved Rim Widths (Inches)	Measuring Rim Width (Inches)	Section Width (Inches)	Overall Diameter (Inches)	Max Load (Lbs)	Tread Depth (in 32nds)	Revs / Mile	UTQG
<b>Discoverer EnduraMax</b>													
205/70R16	97H	SL	BLK	166218007	245439	5.0 - 7.0	6.0	8.2	27.3	1609	10	759	640 A A
*215/65R16	98H	SL	BLK	166222007	245640	6.0 - 7.5	6.5	8.7	27.0	1653	10	768	640 A A
215/70R16	100H	SL	BLK	166226007	245649	5.5 - 7.0	6.5	8.5	27.7	1764	10	748	640 A A
235/70R16	106H	SL	BLK	166227007	245650	6.0 - 8.0	7.0	9.4	28.8	2094	10	719	640 A A
215/55R17	94V	SL	BLK	166219007	245635	6.0 - 7.5	7.0	8.9	26.3	1477	10	788	640 A A
215/60R17	96H	SL	BLK	166232007	245597	6.0 - 7.5	6.5	8.7	27.2	1565	10	763	640 A A
215/65R17	99H	SL	BLK	166233007	245598	6.0 - 7.5	6.5	8.7	28.0	1709	10	740	640 A A
225/50R17	98V	XL	BLK	166220007	245637	6.0 - 8.0	7.0	9.2	25.9	1653	10	800	640 A A
225/55R17	97H	SL	BLK	166234007	245707	6.0 - 8.0	7.0	9.2	26.8	1609	10	774	640 A A
225/60R17	99H	SL	BLK	166263007	245662	6.0 - 8.0	6.5	9.0	27.6	1709	10	750	640 A A
225/65R17	102H	SL	BLK	166240007	245663	6.0 - 8.0	6.5	9.0	28.5	1874	10	727	640 A A
235/55R17	99H	SL	BLK	166243007	245708	6.5 - 8.5	7.5	9.6	27.2	1709	10	763	640 A A
235/60R17	102H	SL	BLK	166251007	245709	6.5 - 8.5	7.0	9.4	28.1	1874	10	738	640 A A
235/65R17	104H	SL	BLK	166238007	245664	6.5 - 8.5	7.0	9.4	29.1	1984	10	714	640 A A
245/65R17	107H	SL	BLK	166310007	245688	7.0 - 8.5	7.0	9.6	29.5	2149	10	702	640 A A
215/55R18	99H	XL	BLK	166299007	245652	6.0 - 7.5	7.0	8.9	27.3	1709	10	760	640 A A
225/45R18	95V	XL	BLK	166221007	245639	7.0 - 8.5	7.5	8.9	25.9	1521	10	799	640 A A
225/55R18	102H	XL	BLK	166300007	245653	6.0 - 8.0	7.0	9.1	27.8	1874	10	747	640 A A
225/60R18	100H	SL	BLK	166246007	245654	6.0 - 8.0	6.5	9.0	28.6	1764	10	724	640 A A
235/50R18	97V	SL	BLK	166229007	245594	6.5 - 8.5	7.5	9.6	27.3	1609	10	760	640 A A
235/55R18	104V	XL	BLK	166231007	245596	6.5 - 8.5	7.5	9.6	28.2	1984	10	737	640 A A
235/60R18	107H	XL	BLK	166301007	245655	6.5 - 8.5	7.0	9.4	29.1	2149	10	713	640 A A
245/60R18	105H	SL	BLK	166241007	245656	7.0 - 8.5	7.0	9.8	29.6	2039	10	701	640 A A
225/55R19	99V	SL	BLK	166303007	245660	6.0 - 8.0	7.0	9.1	28.8	1709	10	720	640 A A
235/40R19	96V	XL	BLK	166230007	245595	8.0 - 9.5	8.5	9.5	26.4	1565	10	785	640 A A
235/50R19	99H	SL	BLK	166304007	245661	6.5 - 8.5	7.5	9.6	28.3	1709	10	733	640 A A
235/55R19	105H	XL	BLK	166203007	245657	6.5 - 8.5	7.5	9.6	29.2	2039	10	711	640 A A
235/55R20	102H	SL	BLK	166262007	245658	6.5 - 8.5	7.5	9.5	30.2	1874	10	687	640 A A
245/50R20	102V	SL	BLK	166302007	245659	7.0 - 8.5	7.5	10.0	29.7	1874	10	698	640 A A

\*Discontinued July 2023- February 2024

Do not attempt to mount 16" rim diameter tires on 16.5" rim diameter wheels; this may result in serious injury or death.

For more complete information, go to Tire-HQ™ at [www.tire-hq.com](http://www.tire-hq.com) or contact your Goodyear representative.

Up to 70,000 mile / 115,000 km

LIMITED TREADWEAR WARRANTY\*

# ProControl®

Passenger/CUV

The **Cooper® ProControl®** tire was designed to take the “what ifs” out of your journey. With optimized wet traction, you’ll trust it to get you from point A to point B with zero Qs.

- Designed to promote even wear for crisp handling at every turn
- Engineered to help take on water while maintaining grip
- Stronger materials added to help extend tread life



## Limited Treadwear Warranty\*

45-DAY Test Drive\*



60,000 mile / 96,000 km W-Rated

70,000 mile / 115,000 km V / H-Rated

### Widening Siping Technology

Sipes widen as the tire wears to help maintain grip on the road allowing water/snow to clear the tread.

### Even Wear Arc™ Technology

Tire shape engineered to help strategically balance pressure at the tire-to-road contact area.

### Water Evacuation Grooves

Sweeping grooves that help evacuate water from the tread. This helps improve wet traction.

### Wear Extending Technology

Larger polymers add strength to the compound to help extend tread life.

### Armor Belt™ Technology

Steel belts help provide the stiffness and strength needed for a crisp steering response.



COMMUTER TOURING



Size	Service Description	Load Range	Sidewall	Product Code	Material Number	Approved Rim Widths (Inches)	Measuring Rim Width (Inches)	Section Width (Inches)	Overall Diameter (Inches)	Max Load (Lbs)	Tread Depth (in 32nds)	Revs / Mile	UTQG
<b>ProControl</b>													
205/55R16	91V	SL	BLK	166435021	248949	5.5 - 7.5	6.5	8.4	24.9	1356	10	833	740 A A
205/65R16	95H	SL	BLK	166434021	248948	5.5 - 7.5	6.0	8.2	26.5	1521	10	784	740 A A
215/60R16	95V	SL	BLK	166436021	248950	6.0 - 7.5	6.5	8.7	26.1	1521	10	793	740 A A
205/50R17	93V	XL	BLK	166437021	248951	5.5 - 7.5	6.5	8.4	25.1	1433	10	825	740 A A
205/55R17	95V	XL	BLK	166472021	248965	5.5 - 7.5	6.5	8.4	25.9	1521	10	800	740 A A
215/45R17	91W	XL	BLK	166429021	248943	7.0 - 8.0	7.0	8.4	24.7	1356	10	843	600 A A
215/50R17	95V	XL	BLK	166438021	248952	6.0 - 7.5	7.0	8.9	25.5	1521	10	813	740 A A
215/55R17	94V	SL	BLK	166441021	248955	6.0 - 7.5	7.0	8.9	26.3	1477	10	788	740 A A
225/45R17	94W	XL	BLK	166425021	247069	7.0 - 8.5	7.5	8.9	25.0	1477	10	831	600 A A
225/50R17	98V	XL	BLK	166439021	248953	6.0 - 8.0	7.0	9.2	25.9	1653	10	800	740 A A
225/55R17	97V	SL	BLK	166443021	248956	6.0 - 8.0	7.0	9.2	26.8	1609	10	774	740 A A
225/60R17	99V	SL	BLK	166475021	248968	6.0 - 8.0	6.5	9.0	27.6	1709	10	750	740 A A
225/65R17	102H	SL	BLK	166476021	248969	6.0 - 8.0	6.5	9.0	28.5	1874	10	727	740 A A
235/50R17	96V	SL	BLK	166442021	248954	6.5 - 8.5	7.5	9.6	26.3	1565	10	788	740 A A
235/55R17	99W	SL	BLK	166424021	247068	6.5 - 8.5	7.5	9.6	27.2	1709	10	763	600 A A
235/65R17	104H	SL	BLK	166484021	248977	6.5 - 8.5	7.0	9.4	29.1	1984	11	714	740 A A
245/65R17	107H	SL	BLK	166490021	248983	7.0 - 8.5	7.0	9.8	29.5	2149	11	702	740 A A
245/70R17	110T	SL	BLK	166602021	261972	6.5 - 8.0	7.0	9.8	30.6	2337	12	684	740 A B
255/65R17	110T	SL	BLK	166617021	273603	7.0 - 9.0	7.5	10.2	30.1	2337	10	695	740 A B
265/65R17	112H	SL	BLK	166500021	248992	7.5 - 9.5	8.0	10.7	30.6	2469	11	679	740 A A
265/70R17	115T	SL	BLK	166568021	261888	7.0 - 9.0	8.0	10.7	31.7	2679	12	660	740 A B
225/40R18	92V	XL	BLK	166445021	248958	7.5 - 9.0	8.0	9.1	25.1	1389	10	829	740 A A
225/45R18	95W	XL	BLK	166426021	247070	7.0 - 8.5	7.5	8.9	25.9	1521	10	799	600 A A
225/50R18	95V	SL	BLK	166470021	248963	6.0 - 8.0	7.0	9.2	26.9	1521	10	773	740 A A
225/55R18	98H	SL	BLK	166473021	248966	6.0 - 8.0	7.0	9.1	27.8	1653	10	747	740 A A
225/60R18	100H	SL	BLK	166474021	248967	6.0 - 8.0	6.5	9.0	28.6	1764	10	724	740 A A
235/40R18	95W	XL	BLK	166433021	248947	8.0 - 9.5	8.5	9.5	25.4	1521	10	816	600 A A
235/45R18	94V	SL	VS	166284021	249313	7.5 - 9.0	8.0	9.3	26.3	1477	10	787	740 A A
235/50R18	97W	SL	BLK	166427021	248941	6.5 - 8.5	7.5	9.6	27.3	1609	10	760	600 A A
235/55R18	104V	XL	BLK	166480021	248973	6.5 - 8.5	7.5	9.6	28.2	1984	11	737	740 A A
235/60R18	107V	XL	BLK	166483021	248976	6.5 - 8.5	7.0	9.4	29.1	2149	11	713	740 A A
235/65R18	106V	SL	BLK	166497021	248978	6.5 - 8.5	7.0	9.4	30.0	2094	11	690	740 A A
245/40R18	97W	XL	BLK	166431021	248945	8.0 - 9.5	8.5	9.8	25.7	1609	10	809	600 A A
245/45R18	100V	XL	BLK	166444021	248957	7.5 - 9.0	8.0	9.6	26.7	1764	10	778	740 A A
245/50R18	100V	SL	BLK	166449021	248962	7.0 - 8.5	7.5	10.0	27.7	1764	10	749	740 A A
245/60R18	105H	SL	BLK	166488021	248981	7.0 - 8.5	7.0	9.8	29.6	2039	11	701	740 A A
255/65R18	111H	SL	BLK	166496021	248989	7.0 - 9.0	7.5	10.2	31.1	2403	11	667	740 A A
265/60R18	110H	SL	BLK	166505021	248997	7.5 - 9.5	8.0	10.7	30.5	2337	11	680	740 A A
265/65R18	114T	SL	BLK	166550021	261889	7.5 - 9.5	8.0	10.7	31.5	2601	11	663	740 A B
275/65R18	116T	SL	BLK	166545021	261971	7.5 - 9.5	8.0	11.0	32.1	2756	11	651	740 A B
225/45R19	96W	XL	BLK	166432021	248946	7.0 - 8.5	7.5	8.9	27.0	1565	10	769	600 A A
225/55R19	99V	SL	BLK	166478021	248971	6.0 - 8.0	7.0	9.1	28.8	1709	10	720	740 A A
235/40R19	96V	XL	BLK	166471021	248964	8.0 - 9.5	8.5	9.5	26.4	1565	10	785	740 A A
235/45R19	95H	SL	BLK	166477021	248970	7.5 - 9.0	8.0	9.3	27.4	1521	10	758	740 A A
235/50R19	99V	SL	BLK	166479021	248972	6.5 - 8.5	7.5	9.6	28.3	1709	11	732	740 A A
235/55R19	105V	XL	BLK	166481021	248974	6.5 - 8.5	7.5	9.6	29.2	2039	11	711	740 A A
245/40R19	98W	XL	BLK	166428021	248942	8.0 - 9.5	8.5	9.8	26.7	1653	10	776	600 A A
245/45R19	102W	XL	BLK	166430021	248944	8.5 - 10.0	9.0	9.6	27.7	1874	10	749	600 A A
245/55R19	107H	XL	BLK	166487021	248980	7.0 - 8.5	7.5	10.0	29.7	2149	11	699	740 A A
255/45R19	104V	XL	BLK	166446021	248959	8.0 - 9.5	8.5	10.0	28.1	1984	10	739	740 A A
255/50R19	107V	XL	BLK	166492021	248985	7.0 - 9.0	8.0	10.4	29.1	2149	11	713	740 A A
255/55R19	111V	XL	BLK	166494021	248987	7.0 - 9.0	8.0	10.4	30.0	2403	11	690	740 A A
235/55R20	102V	SL	BLT	166482021	248975	6.5 - 8.5	7.5	9.6	30.2	1874	11	687	740 A A
245/45R20	103V	XL	BLK	166448021	248961	7.5 - 9.0	8.0	9.6	28.7	1929	10	725	740 A A
245/50R20	102V	SL	BLK	166486021	248979	7.0 - 8.5	7.5	10.0	29.7	1874	11	698	740 A A
245/60R20	107H	SL	BLK	166489021	248982	7.0 - 8.5	7.0	9.8	31.6	2149	11	657	740 A A
255/45R20	105V	XL	BLK	166491021	248984	8.0 - 9.5	8.5	10.0	29.1	2039	11	714	740 A A
255/50R20	109V	XL	BLK	166493021	248986	7.0 - 9.0	8.0	10.4	30.1	2271	11	689	740 A A
255/55R20	110V	XL	BLK	166495021	248988	7.0 - 9.0	8.0	10.4	31.0	2337	11	668	740 A A
265/45R20	108H	XL	BLK	166498021	248990	8.5 - 10.0	9.0	10.5	29.4	2205	11	706	740 A A
265/50R20	111V	XL	BLK	166499021	248991	7.5 - 9.5	8.5	10.9	30.5	2403	11	680	740 A A
275/45R20	110V	XL	BLK	166501021	248993	8.5 - 10.5	9.0	10.7	29.8	2337	11	697	740 A A
275/55R20	117H	XL	BLK	166502021	248994	7.5 - 9.5	8.5	11.2	31.9	2833	11	650	740 A A
275/60R20	115H	SL	BLK	166554021	261890	7.5 - 9.5	8.0	11.0	33.0	2679	11	634	740 A A
275/50R22	111H	SL	BLK	166503021	248995	7.5 - 9.5	8.5	11.2	32.9	2403	11	631	740 A A
285/45R22	114H	XL	BLK	166504021	248996	9.0 - 10.5	9.5	11.2	32.1	2601	11	646	740 A A

Do not attempt to mount 16" rim diameter tires on 16.5" rim diameter wheels; this may result in serious injury or death.

For more complete information, go to Tire-HQ™ at [www.tire-hq.com](http://www.tire-hq.com) or contact your Goodyear representative.

Up to **75,000 mile / 120,000 km**  
**LIMITED TREADWEAR WARRANTY**

# Discoverer® SRX™

Passenger/CUV

The **Discoverer SRX** is designed to provide a long tread life and ride comfort for a wide range of trucks, small- and mid-sized SUVs.

- Ride comfort
- Quiet ride
- Reliable all-season traction



## Limited Treadwear Warranty\*

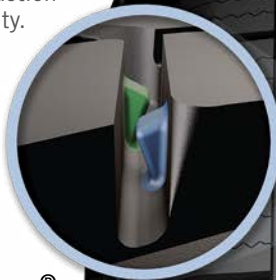
45-DAY Test Drive\*



**65,000 mile / 105,000 km** V-Rated  
**70,000 mile / 115,000 km** H-Rated  
**75,000 mile / 120,000 km** T / S-Rated

### Stabiledge™ Technology

Enhances handling and dry traction stability.



### Wear Square® Indicator

Visual wear indicator allows you to quickly see the approximate tread life remaining on your tires.



### Silica Compound

Helps improve performance and lowers rolling resistance for better fuel mileage.

### 3D Micro-Gauge™ Siping

Full depth and variable biting grooves (siping) helps maintain stability.



**COMMUTER TOURING**



Size	Service Description	Load Range	Sidewall	Product Code	Material Number	Approved Rim Widths (Inches)	Measuring Rim Width (Inches)	Section Width (Inches)	Overall Diameter (Inches)	Max Load (Lbs)	Tread Depth (in 32nds)	Revs / Mile	UTQG
<b>Discoverer SRX</b>													
215/70R16	100H	SL	BLK	166553019	252172	5.5 - 7.0	6.5	8.7	27.9	1764	12	743	740 A A
235/70R16	106T	SL	BLK	166601019	252764	6.0 - 8.0	7.0	9.4	28.8	2094	12	715	740 A B
265/70R16	112T	SL	BLK	166556019	252176	7.0 - 9.0	8.0	10.7	30.6	2469	12	682	740 A B
*225/65R17	102H	SL	BLK	166476019	252171	6.0 - 8.0	6.5	9.2	28.5	1874	11	726	740 A A
*235/65R17	104T	SL	BLK	166604019	253014	6.5 - 8.5	7.0	9.6	29.3	1984	11	709	740 A B
245/70R17	110T	SL	BLK	166602019	253011	6.5 - 8.0	7.0	9.8	30.4	2337	12	681	740 A B
255/70R17	112T	SL	BLK	166605019	253227	6.5 - 8.5	7.5	10.2	31.1	2469	12	667	740 A B
265/70R17	115T	SL	OWL	166568023	252490	7.0 - 9.0	8.0	10.7	31.7	2679	12	660	740 A B
*235/55R18	100V	SL	BLK	166555019	252175	6.5 - 8.5	7.5	9.8	28.3	1764	11	733	700 A A
*235/60R18	107V	XL	BLK	166483019	252425	6.5 - 8.5	7.0	9.5	29.1	2149	11	713	700 A A
*235/65R18	106H	SL	BLK	166557019	252344	6.5 - 8.5	7.0	9.4	30.1	2094	11	689	740 A A
*245/60R18	105H	SL	BLK	166488019	251527	7.0 - 8.5	7.0	9.4	29.7	2039	11	698	740 A A
255/55R18	109V	XL	BLK	166563019	252422	7.0 - 9.0	8.0	10.4	29.1	2271	11	714	700 A A
255/70R18	113T	SL	BLK	166546019	251526	6.5 - 8.5	7.5	10.3	32.2	2535	12	645	740 A B
*265/60R18	110T	SL	BLK	166548019	251529	7.5 - 9.5	8.0	10.6	30.5	2337	11	680	740 A B
265/65R18	114T	SL	BLK	166550019	252016	7.5 - 9.5	8.0	10.5	31.5	2601	11	657	740 A B
265/70R18	116T	SL	BLK	166608019	253413	7.0 - 9.0	8.0	10.7	32.6	2756	12	636	740 A B
275/65R18	116T	SL	BLK	166545019	251525	7.5 - 9.5	8.0	10.9	32.1	2756	11	645	740 A B
*225/55R19	99H	SL	BLK	166549019	252014	6.0 - 8.0	7.0	9.1	28.8	1709	11	720	740 A A
*245/55R19	107H	XL	BLK	166487019	252486	7.0 - 8.5	7.5	9.8	29.7	2149	11	698	740 A A
255/60R19	109H	SL	BLK	166547019	251528	7.0 - 9.0	7.5	10.2	31.1	2271	11	673	740 A A
*235/55R20	102H	SL	BLK	166560019	252015	6.5 - 8.5	7.5	9.5	30.2	1874	11	687	740 A A
*245/50R20	102V	SL	BLK	166486019	251821	7.0 - 8.5	7.5	10.0	29.7	1874	11	704	700 A A
*255/50R20	109H	XL	BLK	166561019	252373	7.0 - 9.0	8.0	10.4	30.1	2271	11	689	740 A A
*255/55R20	110H	XL	BLK	166562019	252405	7.0 - 9.0	8.0	10.4	31.2	2337	11	674	740 A A
*275/55R20	117H	XL	BLK	166502019	252020	7.5 - 9.5	8.5	11.1	31.9	2833	11	650	740 A A
275/60R20	115H	SL	BLK	166554019	252173	7.5 - 9.5	8.0	10.9	33.0	2679	11	628	740 A A
*285/45R22	114H	XL	BLK	166504019	253012	9.0 - 10.5	9.5	11.4	32.1	2601	11	642	740 A A

\*Discontinued July 2023 - February 2024

Do not attempt to mount 16" rim diameter tires on 16.5" rim diameter wheels; this may result in serious injury or death.

65,000 mile / 105,000 km  
LIMITED TREADWEAR WARRANTY\*

# Endeavor<sup>®</sup>

Passenger/CUV

The **Cooper Endeavor** is on a mission: to deliver all-season traction while providing drivers a good ride. Offering a mix of wet grip, good handling and extended tread life, the **Cooper Endeavor** can do a lot for a long time.

- Even treadwear for tire longevity
- Balanced traction for grip in wet and light snow conditions
- Designed for a smooth ride

Limited Treadwear Warranty\*

45-DAY Test Drive\*

65,000 mile / 105,000 km



### Confidence in the Rain

Offers the right combination of water evacuation grooves and checkmark channels to help flush out water which puts more rubber on the road for better traction in wet conditions.

### Find Peace on the Road

A contemporary tread design reduces noise and delivers a smooth and quiet ride.

### Get a Solid Grip

A trusted and proven design provides predictable and stable handling when you need it.

### Wear Square<sup>®</sup>

The Wear Square<sup>®</sup> Indicator allows you to quickly see the approximate tread life remaining on your tires.



COMMUTER TOURING



Size	Service Description	Load Range	Sideall	Product Code	Material Number	Approved Rim Widths (Inches)	Measuring Rim Width (Inches)	Section Width (Inches)	Overall Diameter (Inches)	Max Load (Lbs)	Tread Depth (in 32nds)	Revs / Mile	UTQG
<b>Endeavor</b>													
185/60R15	84T	SL	BLK	166002008	245666	5.0 - 6.5	5.5	7.4	23.7	1102	10	873	680 A A
185/65R15	88H	SL	BLK	166275008	245442	5.0 - 6.5	5.5	7.4	24.5	1235	10	848	680 A A
195/60R15	88H	SL	BLK	166276008	245623	5.5 - 7.0	6.0	7.9	24.2	1235	10	856	680 A A
195/65R15	91H	SL	BLK	166277008	245624	5.5 - 7.0	6.0	7.9	25.0	1356	10	829	680 A A
205/65R15	94H	SL	BLK	166311008	245538	5.5 - 7.5	6.0	8.2	25.5	1477	10	814	680 A A
215/70R15	98H	SL	BLK	166293008	245631	5.5 - 7.0	6.5	8.7	26.9	1653	10	771	680 A A
205/55R16	91H	SL	BLK	166286008	245614	5.5 - 7.5	6.5	8.4	24.9	1356	10	833	680 A A
205/60R16	92V	SL	BLK	166027008	245669	5.5 - 7.5	6.0	8.2	25.7	1389	10	808	680 A A
205/65R16	95H	SL	BLK	166287008	245615	5.5 - 7.5	6.0	8.2	26.5	1521	10	784	680 A A
215/55R16	97H	XL	BLK	166288008	245616	6.0 - 7.5	7.0	8.9	25.3	1609	10	820	680 A A
215/60R16	95V	SL	BLK	166028008	245670	6.0 - 7.5	6.5	8.7	26.1	1521	10	793	680 A A
225/60R16	98H	SL	BLK	166289008	245619	6.0 - 8.0	6.5	9.0	26.6	1653	10	785	680 A A
225/65R16	100H	SL	BLK	166292008	245620	6.0 - 8.0	6.5	9.0	27.5	1764	10	761	680 A A
205/50R17	93V	XL	BLK	166278008	245625	5.5 - 7.5	6.5	8.4	25.1	1433	10	825	680 A A
215/45R17	91V	XL	BLK	166279008	245629	7.0 - 8.0	7.0	8.4	24.7	1356	10	840	680 A A
215/50R17	95V	XL	BLK	166280008	245626	6.0 - 7.5	7.0	8.9	25.5	1521	10	813	680 A A
215/55R17	94V	SL	BLK	166290008	245617	6.0 - 7.5	7.0	8.7	26.3	1477	10	787	680 A A
225/45R17	91V	SL	BLK	166291008	245618	7.0 - 8.5	7.5	8.9	25.0	1356	10	831	680 A A
225/50R17	98V	XL	BLK	166282008	245628	6.0 - 8.0	7.0	9.2	25.9	1653	10	800	680 A A
225/55R17	97V	SL	BLK	166035008	245667	6.0 - 8.0	7.0	9.2	26.8	1609	10	774	680 A A
235/50R17	96V	SL	BLK	166285008	245613	6.5 - 8.5	7.5	9.6	26.3	1565	10	788	680 A A
225/45R18	95V	XL	BLK	166281008	245627	7.0 - 8.5	7.5	8.9	25.9	1521	10	799	680 A A
225/50R18	95V	SL	BLK	166092008	245668	6.0 - 8.0	7.0	9.2	26.9	1521	10	771	680 A A
235/45R18	94V	SL	BLK	166284008	245633	7.5 - 9.0	8.0	9.3	26.3	1477	10	787	680 A A
245/45R18	100V	XL	BLK	166294008	245632	7.5 - 9.0	8.0	9.6	26.7	1764	10	778	680 A A
235/40R19	96V	XL	BLK	166283008	245634	8.0 - 9.5	8.5	9.5	26.4	1565	10	785	680 A A

Do not attempt to mount 16" rim diameter tires on 16.5" rim diameter wheels; this may result in serious injury or death.

65,000 mile / 105,000 km  
LIMITED TREADWEAR WARRANTY\*

# Endeavor Plus™

Passenger/CUV

The **Cooper Endeavor Plus** is designed to target CUVs, SUVs and pickup trucks of all sizes. Designed to offer consumers balanced traction for their vehicle – whether large, medium, or compact.

No matter the size of your SUV or pickup truck, the **Cooper Endeavor Plus** offers a fortified design and good traction in the rain to bring the most out of your vehicle. This tire delivers a combination of handling, even tread wear, wet traction, and a quiet ride.

- Long lasting treadwear
- Balanced performance for grip in wet and light snow conditions
- Designed for a quiet ride



## Limited Treadwear Warranty\*

45-DAY Test Drive\*

65,000 mile / 105,000 km



### Confidence in the Rain

Offers the right combination of water evacuation grooves and checkmark channels to help flush out water which puts more rubber on the road for better traction in wet conditions.

### Find Peace on the Road

A contemporary tread design reduces noise and delivers a smooth and quiet ride.



### Add More Miles

An added layer of reinforced material gives you more contact with the road for even tread wear and a long tire life.

### Wear Square®

The Wear Square® Indicator allows you to quickly see the approximate tread life remaining on your tires.



# Endeavor Plus™

Size	Service Description	Load Range	Sidewall	Product Code	Material Number	Approved Rim Widths (Inches)	Measuring Rim Width (Inches)	Section Width (Inches)	Overall Diameter (Inches)	Max Load (Lbs)	Tread Depth (in 32nds)	Revs / Mile	UTQG
<b>Endeavor Plus</b>													
205/70R16	97H	SL	BLK	166307009	245690	5.0 - 7.0	6.0	8.2	27.3	1609	10	759	680 A A
215/65R16	98H	SL	BLK	166242009	245537	6.0 - 7.5	6.5	8.7	27.0	1653	10	768	680 A A
215/70R16	100H	SL	BLK	166256009	245574	5.5 - 7.0	6.5	8.7	27.7	1764	10	748	680 A A
235/65R16	103T	SL	BLK	166295009	245622	6.5 - 8.5	7.0	9.4	28.0	1929	10	740	680 A A
235/70R16	106T	SL	BLK	166264009	245602	6.0 - 8.0	7.0	9.4	28.8	2094	12	719	680 A B
265/70R16	112T	SL	BLK	166265009	245603	7.0 - 9.0	8.0	10.8	30.4	2469	12	683	680 A B
215/60R17	96H	SL	BLK	166244009	245484	6.0 - 7.5	6.5	8.7	27.2	1565	10	763	680 A A
215/65R17	99T	SL	BLK	166274009	245621	6.0 - 7.5	6.5	8.7	28.0	1709	10	740	680 A A
225/60R17	99H	SL	BLK	166263009	245601	6.0 - 8.0	6.5	9.0	27.6	1709	10	750	680 A A
225/65R17	102H	SL	BLK	166240009	245535	6.0 - 8.0	6.5	9.1	28.5	1874	10	726	680 A A
235/55R17	99H	SL	BLK	166243009	245483	6.5 - 8.5	7.5	9.6	27.2	1709	10	763	680 A A
235/60R17	102H	SL	BLK	166251009	245490	6.5 - 8.5	7.0	9.4	28.1	1874	10	738	680 A A
235/65R17	104H	SL	BLK	166238009	245533	6.5 - 8.5	7.0	9.4	29.2	1984	10	711	680 A A
245/65R17	107T	SL	BLK	166266009	245604	7.0 - 8.5	7.0	9.5	29.5	2149	11	702	680 A B
245/70R17	110T	SL	BLK	166268009	245606	6.5 - 8.0	7.0	9.7	30.4	2337	12	681	680 A B
265/65R17	112T	SL	BLK	166267009	245605	7.5 - 9.5	8.0	10.6	30.6	2469	11	678	680 A B
265/70R17	115T	SL	BLK	166269009	245607	7.0 - 9.0	8.0	10.7	31.4	2679	12	661	680 A B
215/55R18	95H	SL	BLK	166253009	245571	6.0 - 7.5	7.0	8.9	27.3	1521	10	760	680 A A
225/55R18	98H	SL	BLK	166245009	245485	6.0 - 8.0	7.0	9.2	27.8	1653	10	747	680 A A
225/60R18	100H	SL	BLK	166246009	245486	6.0 - 8.0	6.5	9.0	28.6	1764	10	724	680 A A
235/50R18	97V	SL	BLK	166237009	245532	6.5 - 8.5	7.5	9.6	27.3	1609	10	760	680 A A
235/55R18	104V	XL	BLK	166258009	245576	6.5 - 8.5	7.5	9.8	28.3	1984	10	732	680 A A
235/60R18	107V	XL	BLK	166236009	245531	6.5 - 8.5	7.0	9.4	29.3	2149	11	708	680 A A
235/65R18	106H	SL	BLK	166257009	245575	6.5 - 8.5	7.0	9.4	30.1	2094	11	689	680 A A
245/60R18	105H	SL	BLK	166241009	245536	7.0 - 8.5	7.0	9.6	29.7	2039	11	698	680 A A
255/65R18	111H	SL	BLK	166305009	245689	7.0 - 9.0	7.5	10.1	31.1	2403	11	667	680 A A
265/60R18	110T	SL	BLK	166271009	245608	7.5 - 9.5	8.0	10.5	30.6	2337	11	679	680 A A
265/65R18	114T	SL	BLK	166272009	245609	7.5 - 9.5	8.0	10.7	31.5	2601	11	658	680 A B
275/65R18	116T	SL	BLK	166273009	245610	7.5 - 9.5	8.0	11.0	32.1	2756	11	645	680 A B
225/55R19	99H	SL	BLK	166260009	245578	6.0 - 8.0	7.0	9.2	28.9	1709	10	718	680 A A
235/55R19	105V	XL	BLK	166327009	246669	6.5 - 8.5	7.5	9.6	29.2	2039	10	711	680 A A
245/55R19	107H	XL	BLK	166255009	245573	7.0 - 8.5	7.5	9.8	29.7	2149	11	698	680 A A
255/60R19	109H	SL	BLK	166249009	245488	7.0 - 9.0	7.5	10.2	31.1	2271	11	667	680 A A
235/55R20	102H	SL	BLK	166262009	245580	6.5 - 8.5	7.5	9.7	30.2	1874	11	687	680 A A
245/50R20	102V	SL	BLK	166250009	245489	7.0 - 8.5	7.5	9.8	29.7	1874	10	698	680 A A
255/50R20	109H	XL	BLK	166259009	245577	7.0 - 9.0	8.0	10.4	30.1	2271	11	689	680 A A
255/55R20	110H	XL	BLK	166247009	245487	7.0 - 9.0	8.0	10.4	31.1	2337	11	667	680 A A
265/50R20	111T	XL	BLK	166235009	245441	7.5 - 9.5	8.5	10.7	30.6	2403	11	677	680 A B
275/55R20	117H	XL	BLK	166254009	245572	7.5 - 9.5	8.5	10.9	31.9	2833	11	649	680 A A
275/60R20	115H	SL	BLK	166239009	245534	7.5 - 9.5	8.0	10.9	33.0	2679	11	628	680 A A
285/45R22	114H	XL	BLK	166261009	245579	9.0 - 10.5	9.5	11.2	32.1	2601	11	645	680 A A

Do not attempt to mount 16" rim diameter tires on 16.5" rim diameter wheels; this may result in serious injury or death.

50,000 mile / 80,000 km  
LIMITED TREADWEAR WARRANTY\*

# Discoverer® SRX<sup>LE</sup>™

Passenger/CUV

The **Discoverer SRX<sup>LE</sup>** features advanced performance construction to deliver steering response, stability in handling maneuvers and a smooth, comfortable ride.

- Steering response
- Stability in handling maneuvers
- Smooth comfortable ride
- OE all-season luxury touring



## Limited Treadwear Warranty\*

45-DAY Test Drive\*

50,000 mile / 80,000 km



### Tire Profile Shape

Provides a finely tuned footprint shape interacting with the road to help enhance vehicle control.

### Advanced Performance Construction

Helps deliver strong steering response, stability in handling maneuvers and a smooth comfortable ride.

### Leading Edge Tread Technology

Helps enhance traction.

### Micro-Gauge™ Zigzag Siping

Thin grooves (sipes) creates additional biting edges for enhanced traction while providing stability for vehicle handling.

### Aqua Vac™ Channels

Wide grooves in the tread helps improve the tire's resistance to hydroplaning.



COMMUTER TOURING



Size	Service Description	Load Range	Sidewall	Product Code	Material Number	Approved Rim Widths (Inches)	Measuring Rim Width (Inches)	Section Width (Inches)	Overall Diameter (Inches)	Max Load (Lbs)	Tread Depth (in 32nds)	Revs / Mile	UTQG	ORIGINAL EQUIPMENT FITMENT- 2024
<b>Discoverer SRX-LE</b>														
*255/50R19	107H	XL	BLK	166469003	252017	7.0 - 9.0	8.0	10.4	29.1	2149	10	718	600 A A	MERCEDES-BENZ GLE-CLASS (2023 - 2024)
255/50R19	107H	XL	BLK	166613003	271691	7.0 - 9.0	8.0	10.4	29.1	2149	11	718	600 A A	MERCEDES-BENZ GLE-CLASS (2024 - 2024)
*275/50R20	109H	SL	BLK	166468020	247168	7.5 - 9.5	8.5	11.4	31.0	2271	10	669	600 A A	MERCEDES-BENZ GLE-CLASS (2023 - 2024)
275/50R20	109H	SL	BLK	166614003	271692	7.5 - 9.5	8.5	11.4	31.0	2271	11	669	600 A A	MERCEDES-BENZ GLE-CLASS (2024 - 2024)

\*Discontinued July 2023- February 2024

# PERFORMANCE

---



**Cobra  
Instinct®**

**Cobra® Radial  
G/T™**

**Discoverer®  
CrossRange®**

**Cooper® Zeon  
CrossRange®**

# 2024 COOPER® PERFORMANCE TIRE SELECTOR CHART

	All-Season UHP		Sport Performance		
	Cobra Instinct	Zeon RS3-G1	Cobra Radial G/T	Discoverer CrossRange Discoverer CrossRange NRT	Zeon CrossRange Zeon CrossRange NRT
215/70R14			T		
225/70R14			T		
235/60R14			T		
215/65R15			T		
215/70R15			T		
225/70R15			T		
235/60R15			T		
235/70R15			T		
245/60R15			T		
255/60R15			T		
255/70R15			T		
275/60R15			T		
295/50R15			S		
205/55R16		W			
245/50R16		W			
205/45R17		W			
205/50R17		W			
215/45R17	W				
215/50R17		W			
215/55R17		W			
225/45R17	W				
225/50R17		W			
235/45R17		W			
235/50R17		W			
235/55R17		W			
245/40R17		W			
245/45R17	W				
255/40R17		W			
275/40R17		W			
215/45R18		W			
225/40R18	Y				
225/45R18	Y				
225/50R18		W			

	All-Season UHP		Sport Performance		
	Cobra Instinct	Zeon RS3-G1	Cobra Radial G/T	Discoverer CrossRange Discoverer CrossRange NRT	Zeon CrossRange Zeon CrossRange NRT
235/40R18	Y				
235/50R18		W			
245/40R18	Y				
245/45R18	Y				
245/55R18		W			
255/35R18	Y				
255/40R18	Y				
275/40R18		W			
225/40R19	Y				
225/45R19	W				
235/35R19	Y				
235/55R19					H
245/35R19	Y				
245/40R19	Y				
245/45R19	Y				
255/35R19	Y				
255/40R19	Y				
275/35R19	Y				
275/40R19		W			
285/35R19	Y				
245/40R20	Y				
245/45R20	Y				
255/35R20		Y			
255/45R20		W		H	H
265/35R20	Y				
265/50R20				H	H
275/35R20	Y				
275/40R20	Y				
305/35R20		W			
265/40R21					H
275/45R21				H	H
265/35R22					H
275/40R22					H

Size chart includes active products only as of February 2024

Up to **45,000 mile/75,000 km**  
**LIMITED TREADWEAR WARRANTY**

# Cobra Instinct<sup>®</sup>

All-Season UHP

**Cobra Instinct** brings hyper-responsive performance and wet braking capabilities, your senses will be sharper than any turn ahead of you.

- Bring your car to a shorter stop on wet roads\*\*
- Make a statement with striking sidewall styling
- Enjoy decisive maneuvering and sporty performance



**Limited Treadwear Warranty\***

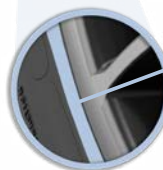
45-DAY Test Drive\*

45,000 mile / 75,000 km



## All-Season Performance

Asymmetric tread pattern enables agile traction and handling no matter the season.



## Rim Protection

Rim protector helps guard and protect wheels from damage.

## Faster Response

Stronger, lightweight design for enhanced responsiveness.\*\*



## Slip Resistant

Get improved grip on wet roads, enabled by sweeping tread grooves.\*\*

\*\*Based on internal product testing; Cooper Zeon RS3-G1 as comparison product.

**PERFORMANCE**



# Cobra Instinct®



Size	Service Description	Load Range	Sidewall	Product Code	Material Number	Approved Rim Widths (Inches)	Measuring Rim Width (Inches)	Section Width (Inches)	Overall Diameter (Inches)	Max Load (Lbs)	Tread Depth (in 32nds)	Revs / Mile	UTQG
<b>Cobra Instinct</b>													
215/45ZR17	91W	XL	VS	160110025	255789	7.0 - 8.0	7.0	8.4	24.7	1356	10	848	500 AA A
225/45ZR17	94W	XL	VS	160113025	259882	7.0 - 8.5	7.5	8.9	25.0	1477	10	837	500 AA A
245/45ZR17	99W	XL	VS	160133025	259901	7.5 - 9.0	8.0	9.6	25.7	1709	10	814	500 AA A
225/40ZR18	92Y	XL	VS	160111025	255790	7.5 - 9.0	8.0	9.1	25.1	1389	10	833	500 AA A
225/45ZR18	95Y	XL	VS	160114025	259883	7.0 - 8.5	7.5	8.9	25.9	1521	10	806	500 AA A
235/40ZR18	95Y	XL	VS	160117025	259886	8.0 - 9.5	8.5	9.5	25.4	1521	10	823	500 AA A
245/40ZR18	97Y	XL	VS	160119025	259888	8.0 - 9.5	8.5	9.8	25.7	1609	10	813	500 AA A
245/45ZR18	100Y	XL	VS	160124025	259891	7.5 - 9.0	8.0	9.6	24.7	1764	10	784	500 AA A
255/35ZR18	94Y	XL	VS	160134025	259902	8.5 - 10.0	9.0	10.2	25.0	1477	10	836	500 AA A
255/40ZR18	99Y	XL	VS	160128025	259895	8.5 - 10.0	9.0	10.2	27.0	1709	10	803	500 AA A
225/40ZR19	93Y	XL	VS	160112025	259881	7.5 - 9.0	8.0	9.1	26.1	1433	10	801	500 AA A
225/45ZR19	96W	XL	VS	160115025	259884	7.0 - 8.5	7.5	8.9	27.0	1565	10	775	500 AA A
235/35ZR19	91Y	XL	VS	160116025	259885	8.0 - 9.5	8.5	9.5	25.5	1356	10	821	500 AA A
245/35ZR19	93Y	XL	VS	160118025	259887	8.0 - 9.5	8.5	9.8	25.8	1433	10	810	500 AA A
245/40ZR19	98Y	XL	VS	160122025	259889	8.0 - 9.5	8.5	9.8	26.7	1653	10	782	500 AA A
245/45ZR19	102Y	XL	VS	160125025	259892	7.5 - 9.0	8.0	9.6	25.1	1874	10	755	500 AA A
255/35ZR19	96Y	XL	VS	160127025	259894	8.5 - 10.0	9.0	10.2	25.9	1565	10	803	500 AA A
255/40ZR19	100Y	XL	VS	160129025	259896	8.5 - 10.0	9.0	10.2	25.5	1764	10	773	500 AA A
275/35ZR19	100Y	XL	VS	160135025	259903	9.0 - 11.0	9.5	10.9	25.8	1764	10	787	500 AA A
285/35ZR19	99Y	SL	VS	160136025	259904	9.5 - 11.0	10.0	11.4	27.7	1709	10	777	500 AA A
245/40ZR20	99Y	XL	VS	160123025	259890	8.0 - 9.5	8.5	9.8	27.7	1709	10	754	500 AA A
245/45ZR20	103Y	XL	VS	160126025	259893	7.5 - 9.0	8.0	9.6	26.1	1929	10	729	500 AA A
265/35ZR20	99Y	XL	VS	160131025	259899	9.0 - 10.5	9.5	10.7	25.4	1709	10	765	500 AA A
275/35ZR20	102Y	XL	VS	160132025	259900	9.0 - 11.0	9.5	10.9	25.7	1874	10	758	500 AA A
275/40ZR20	106Y	XL	VS	160130025	259897	9.0 - 11.0	9.5	10.9	26.7	2094	10	729	500 AA A

For more complete information, go to Tire-HQ™ at [www.tire-hq.com](http://www.tire-hq.com) or contact your Goodyear representative.

Up to **45,000 mile/72,000 km**  
**LIMITED TREADWEAR WARRANTY\***

# Cooper® Zeon RS3-G1™

All-Season UHP

The **Cooper Zeon RS3-G1** is our high performance tire designed for owners of performance vehicles that drive year round.

- Exceptional grip and handling
- Enhanced stability and durability



**Limited Treadwear Warranty\***

45-DAY Test Drive\*



**45,000 mile / 72,000 km** Y / W-Rated

## Silica Compound

Competition-grade resin that enhances wet traction.

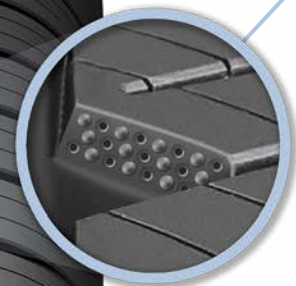
## Wear Square® Indicator

Visual wear indicator allows you to quickly see the approximate tread life remaining on your tires.



## 3D Micro-Gauge™ Siping

Full depth and variable biting grooves (siping) helps maintain wet traction and stability.



**PERFORMANCE**



\*All tires include Nationwide Warranty Service and Online Tire Registration.

Nationwide Warranty Service Link: [https://www.coopertire.com/en\\_US/support/tire-warranty.html](https://www.coopertire.com/en_US/support/tire-warranty.html)

Online Tire Registration Link: [https://www.coopertire.com/en\\_US/support/register-tires.html](https://www.coopertire.com/en_US/support/register-tires.html)

# Cooper® Zeon RS3-G1™

Size	Service Description	Load Range	Sidewall	Product Code	Material Number	Approved Rim Widths (Inches)	Measuring Rim Width (Inches)	Section Width (Inches)	Overall Diameter (Inches)	Max Load (Lbs)	Tread Depth (in 32nds)	Revs / Mile	UTQG
<b>Cooper Zeon RS3-G1</b>													
205/55R16	91W	SL	BLK	160050017	245677	5.5 - 7.5	6.5	8.4	24.9	1356	10	833	500 AA A
245/50R16	97W	SL	BLK	160082017	245712	7.0 - 8.5	7.5	10.0	25.7	1609	10	806	500 AA A
205/45R17	84W	SL	BLK	160056017	245693	6.5 - 7.5	7.0	8.1	24.3	1102	10	854	500 AA A
205/50R17	93W	XL	BLK	160079017	245715	5.5 - 7.5	6.5	8.4	25.1	1433	10	825	500 AA A
215/50R17	95W	XL	BLK	160057017	245694	6.0 - 7.5	7.0	8.9	25.5	1521	10	813	500 AA A
215/55R17	98W	XL	BLK	160058017	245695	6.0 - 7.5	7.0	8.9	26.3	1653	10	788	500 AA A
225/50R17	98W	XL	BLK	160080017	245714	6.0 - 8.0	7.0	9.2	25.9	1653	10	800	500 AA A
235/45R17	94W	SL	BLK	160041017	245600	7.5 - 9.0	8.0	9.3	25.4	1477	10	816	500 AA A
235/50R17	96W	SL	BLK	160068017	245704	6.5 - 8.5	7.5	9.6	26.3	1565	10	790	500 AA A
235/55R17	99W	SL	BLK	160043017	245672	6.5 - 8.5	7.5	9.6	27.2	1709	10	763	500 AA A
245/40R17	91W	SL	BLK	160053017	245680	8.0 - 9.5	8.5	9.8	24.8	1356	10	837	500 AA A
255/40R17	94W	SL	BLK	160054017	245691	8.5 - 10.0	9.0	10.2	25.0	1477	10	828	500 AA A
275/40R17	98W	SL	BLK	160055017	245692	9.0 - 11.0	9.5	10.9	25.7	1653	10	808	500 AA A
215/45R18	93W	XL	BLK	160060017	245697	7.0 - 8.0	7.0	8.4	25.7	1433	10	808	500 AA A
225/50R18	95W	SL	BLK	160063017	245700	6.0 - 8.0	7.0	9.1	26.9	1521	10	770	500 AA A
235/50R18	97W	SL	BLK	160046017	245675	6.5 - 8.5	7.5	9.6	27.3	1609	10	760	500 AA A
245/55R18	103W	SL	BLK	160064017	245701	7.0 - 8.5	7.5	9.9	28.6	1929	10	724	500 AA A
275/40R18	99W	SL	BLK	160072017	245681	9.0 - 11.0	9.5	10.9	26.7	1709	10	778	500 AA A
275/40R19	105W	XL	BLK	160073017	245682	9.0 - 11.0	9.5	10.9	27.7	2039	10	749	500 AA A
255/35R20	97Y	XL	BLK	160029017	245502	8.5 - 10.0	9.0	10.2	27.2	1609	10	763	500 AA A
255/45R20	101W	SL	BLK	160066017	245703	8.0 - 9.5	8.5	10.0	29.1	1819	10	714	500 AA A
305/35R20	107W	XL	BLK	160077017	245686	10.0 - 12.0	11.0	12.3	28.4	2149	10	729	500 AA A

Do not attempt to mount 16" rim diameter tires on 16.5" rim diameter wheels; this may result in serious injury or death.

**40,000 mile / 64,000 km**  
**LIMITED TREADWEAR WARRANTY\***

# Cobra® Radial G/T™

## Sport Performance

The **Cobra Radial G/T** all-season tire features raised white letters for those who want to retain the characteristic “look” of their classic muscle car.

- Raised white lettering style
- Designed to promote even wear
- All-season performance



## Limited Treadwear Warranty\*

45-DAY Test Drive\*

**40,000 mile / 64,000 km** T / S-Rated



### Refined Tread Element Shape

Helps disperse water and slush for excellent all-season traction.

### Notched Center Rib

Combined with the tread element shape, this helps provide even treadwear.

### Shoulder Slotting

Designed for resistance to irregular wear while providing solid, all-season performance.



## PERFORMANCE



# Cobra® Radial G/T™



Size	Service Description	Load Range	Sidewall	Product Code	Material Number	Approved Rim Widths (Inches)	Measuring Rim Width (Inches)	Section Width (Inches)	Overall Diameter (Inches)	Max Load (Lbs)	Tread Depth (in 32nds)	Revs / Mile	UTQG
<b>Cobra Radial G/T</b>													
P215/70R14	96T	SL	RWL	160015024	245463	5.5 - 7.0	6.5	8.7	25.8	1554	10	805	440 A B
P225/70R14	98T	SL	RWL	160016024	245464	6.0 - 7.5	6.5	8.9	26.3	1675	10	790	440 A B
P235/60R14	96T	SL	RWL	160006024	244992	6.5 - 8.5	7.0	9.1	25.1	1565	10	827	440 A B
P215/65R15	95T	SL	RWL	160009024	245024	6.0 - 7.5	6.5	8.4	26.0	1510	10	798	440 A B
P215/70R15	97T	SL	RWL	160020024	245468	5.5 - 7.0	6.5	8.7	26.7	1620	10	777	440 A B
P225/70R15	100T	SL	RWL	160011024	245025	6.0 - 7.5	6.5	9.1	27.4	1753	10	758	440 A B
P235/60R15	98T	SL	RWL	160017024	245465	6.5 - 8.5	7.0	9.1	26.1	1642	10	794	440 A B
P235/70R15	102T	SL	RWL	160012024	245026	6.0 - 8.0	7.0	9.4	27.9	1896	10	743	440 A B
P245/60R15	100T	SL	RWL	160008024	245023	7.0 - 8.5	7.0	9.5	26.5	1753	10	781	440 A B
P255/60R15	102T	SL	RWL	160018024	245467	7.0 - 9.0	7.5	10.2	27.0	1885	10	768	440 A B
P255/70R15	108T	SL	RWL	160013024	245027	6.5 - 8.5	7.5	10.4	28.9	2183	10	716	440 A B
P275/60R15	107T	SL	RWL	160019024	245466	7.5 - 9.5	8.0	10.7	28.1	2149	10	739	440 A B
P295/50R15	105S	SL	RWL	160007024	245022	8.0 - 10.0	9.5	12.2	26.8	2039	10	773	440 A C

For more complete information, go to Tire-HQ™ at [www.tire-hq.com](http://www.tire-hq.com) or contact your Goodyear representative.

# Discoverer® CrossRange®

Sport Performance



Noise Reduction Technology

Size	Service Description	Load Range	Sidewall	Product Code	Material Number	Approved Rim Widths (Inches)	Measuring Rim Width (Inches)	Section Width (Inches)	Overall Diameter (Inches)	Max Load (Lbs)	Tread Depth (in 32nds)	Revs / Mile	UTQG	ORIGINAL EQUIPMENT FITMENT- 2024
<b>Discoverer CrossRange</b>														
255/45R20	105H	XL	BLK	160088022	245005	8.0 - 9.5	8.5	10.1	29.2	2039	10	710	400 A A	MERCEDES-BENZ EQE SUV (2022 - 2024)
265/50R20	111H	XL	BLK	160086015	246724	7.5 - 9.5	8.5	11.1	30.5	2403	10	680	400 A A	MERCEDES-BENZ EQS SUV (2022 - 2024)
275/45R21	107H	SL	BLK	160002015	244743	8.5 - 10.5	9.0	11.2	30.8	2149	11	673	400 A A	MERCEDES-BENZ EQS SUV (2023 - 2024)
<b>Discoverer CrossRange NRT</b>														
275/45R21	107H	SL	BLK	160002019	245795	8.5 - 10.5	9.0	11.2	30.8	2149	11	673	400 A A	MERCEDES-BENZ EQS SUV (2023 - 2024)

# Cooper® Zeon CrossRange®

Sport Performance



Noise Reduction Technology

Size	Service Description	Load Range	Sidewall	Product Code	Material Number	Approved Rim Widths (Inches)	Measuring Rim Width (Inches)	Section Width (Inches)	Overall Diameter (Inches)	Max Load (Lbs)	Tread Depth (in 32nds)	Revs / Mile	UTQG	ORIGINAL EQUIPMENT FITMENT- 2024
<b>Zeon CrossRange</b>														
235/55R19	105H	XL	BLK	160089023	244637	6.5 - 8.5	7.5	10.0	29.3	2039	9	708	280 A A	MERCEDES-BENZ EQE SUV (2022 - 2024)
255/45R20	105H	XL	BLK	160085014	246726	8.0 - 9.5	8.5	10.1	29.3	2039	9	708	280 A A	MERCEDES-BENZ EQE SUV (2022 - 2024)
265/50R20	111H	XL	BLK	160086014	246728	7.5 - 9.5	8.5	11.0	30.6	2403	9	677	280 A A	MERCEDES-BENZ EQS SUV (2022 - 2024)
265/35R22	102H	XL	BLK	160001014	244754	9.0 - 10.5	9.5	10.8	29.4	1874	9	706	280 A A	MERCEDES-BENZ EQE SEDAN (2022 - 2024)
265/40R21	105H	XL	BLK	160004018	245797	9.0 - 10.5	9.5	10.9	29.4	2039	9	705	280 A A	MERCEDES-BENZ EQE-CLASS (2024 - 2024)
275/45R21	107H	SL	BLK	160002018	245791	8.5 - 10.5	9.0	11.0	30.9	2149	9	672	280 A A	MERCEDES-BENZ EQS SUV (2022 - 2024)
265/35R22	102H	XL	BLK	160001018	245793	9.0 - 10.5	9.5	10.8	29.4	1874	9	706	280 A A	MERCEDES-BENZ EQE SUV (2022 - 2024)
275/40R22	107H	XL	BLK	160003018	245559	9.0 - 11.0	9.5	11.1	30.7	2149	9	676	280 A A	MERCEDES-BENZ EQS SUV (2022 - 2024)

For more complete information, go to Tire-HQ™ at [www.tire-hq.com](http://www.tire-hq.com) or contact your Goodyear representative.

**PERFORMANCE**



# ALL-TERRAIN



Discoverer®  
HT3

Discoverer  
Road+Trail® AT

Discoverer®  
AT34S™

Discoverer  
Stronghold™ AT

Discoverer®  
AT3LT™

Discoverer®  
AT3XLT™



Discoverer®  
Rugged Trek®

Discoverer®  
S/T<sub>MAXX</sub>

Discoverer®  
STT Pro

Cooper®  
Evolution® M/T

# 2024 COOPER® ALL TERRAIN TIRE SELECTOR CHART

	On-Road	On-/Off-Road						Off-Road		
	Discoverer HT3	Discoverer Road + Trail AT	Discoverer AT3 4S	Discoverer Stronghold AT	Discoverer AT3 LT	Discoverer AT3 XLT	Discoverer Rugged Trek Discoverer Rugged Trek LT	Discoverer S/T MAXX	Discoverer S/TT Pro	Evolution M/T
185/60R15C	C									
225/70R15		T								
235/75R15		T								
265/70R15			T							
265/75R15			T							
225/75R16		T								
235/65R16C	C									
235/70R16		T								
235/75R16			T							
245/70R16		T								
245/75R16		T								
255/70R16		T								
265/70R16		T				T				
265/75R16		T								
225/60R17		H								
225/65R17		H								
235/65R17		H								
235/75R17		T								
245/65R17		T								
245/70R17		T								
245/75R17		T								
255/65R17		T								
255/70R17		T								
255/75R17		T								
265/65R17		T								
265/70R17		T				T				
285/70R17						T				
225/60R18		H								
235/60R18		H								
235/65R18		V								
245/60R18		H								
255/70R18		T				T				
265/60R18		H				T				
265/65R18		H				T				
265/70R18		H								
275/65R18		H				T				
245/50R20		V								
255/50R20			H							
255/55R20		V								
265/50R20		V				T				
275/55R20		H				T				
275/60R20		H				T				
285/45R22		H				H				
LT235/75R15	C									
31X10.50R15LT							C	C	C	
32X11.50R15LT								C		
33X12.50R15LT							C	C	C	
35X12.50R15LT								C	C	
LT215/85R16	E				E					
LT225/75R16	E			E			E			
LT235/85R16	E			E			E	E		
LT245/75R16	E			E			E	E		
LT255/85R16							E			

	On-Road	On-/Off-Road						Off-Road		
	Discoverer HT3	Discoverer Road + Trail AT	Discoverer AT3 4S	Discoverer Stronghold AT	Discoverer AT3 LT	Discoverer AT3 XLT	Discoverer Rugged Trek Discoverer Rugged Trek LT	Discoverer S/T MAXX	Discoverer S/TT Pro	Evolution M/T
LT265/70R16							E			
LT265/75R16	E			E				E	E	F
LT285/75R16	E			E				E	E	E
LT305/70R16									E	
LT315/75R16						E			E	
LT235/80R17	E			E				E		
LT245/70R17	E			E				E		
LT245/75R17	E			E				E		
LT255/80R17								E		
LT265/70R17	E			E			E	E	E	E
LT275/70R17				E				E		
LT285/70R17				E			E	E	E	E
LT285/75R17				E				E	E	E
LT295/70R17				E				E	E	E
LT305/65R17									E	
LT315/70R17				E			E	D	E	
35X12.50R17LT							E		E	E
37X12.50R17LT							D		D	
37X13.50R17LT									E	
40X13.50R17LT									C	
LT265/60R18				E				E		
LT265/65R18				E				E		
LT265/70R18	E			E				E		
LT275/65R18	E			E			E	E	E	
LT275/70R18	E			E			E	E	E	E
LT285/65R18				E				E	E	
LT285/75R18				E			E			
LT295/70R18				E				E	E	E
LT305/60R18									E,F	
LT305/70R18								E	E	
LT325/65R18									E	
35X12.50R18LT							F		D	
37X13.50R18LT									D	
LT265/60R20				E			E			
LT275/55R20				E						
LT275/60R20				E						
LT275/65R20	E			E			E	E	E	
LT285/55R20							E			
LT285/60R20				E				E		
LT285/65R20							E			
LT295/55R20							E		E	
LT295/60R20							E		E	
LT295/65R20									E	
LT305/55R20							F		F	
33X12.50R20LT							F		F	
35X12.50R20LT				F			F	E,F	E,F	E
35X13.50R20LT									E	
37X12.50R20LT							E		E	
37X13.50R20LT									E	
38X13.50R20LT									D	
38X15.50R20LT									E	
35X12.50R22LT									F	
37X13.50R22LT									E	

Size chart includes active products only as of February 2024

**50,000 mile / 80,000 km**  
**LIMITED TREADWEAR WARRANTY**

# Discoverer® HT3™

## On-Road

The **Discoverer HT3** is designed for drivers of pickup trucks and commercial vans, optimized for highway driving.

- Engineered to help resist abnormal wear
- Impressive handling, performance and traction
- Quiet running tread design



## Limited Treadwear Warranty\*

45-DAY Test Drive\*

50,000 mile / 80,000 km\*\*



### Four Wide Channels

Helps provide better wet stability.

### Continuous Shoulder Ribs

Aids in resistance to irregular wear for longer life and a quieter ride.



### 3D Micro-Gauge™ Siping

Full depth and variable biting grooves (siping) helps maintain wet handling.



\*\* 185/60R15C 94/92T, 205/65R15C 102/100T, 235/65R16C E 121/119R have no mileage warranty, only 45-Day Test Drive Warranty.

**ALL-TERRAIN**



# Discoverer® HT3™



Size	Service Description	Load Range	Sidewall	Product Code	Material Number	Approved Rim Widths (Inches)	Measuring Rim Width (Inches)	Section Width (Inches)	Overall Diameter (Inches)	Max Load (Lbs)	Tread Depth (in 32nds)	Revs / Mile
<b>Discoverer HT3</b>												
185/60R15C	94/92T**	C	BLK	170206003	245416	5.0 - 6.5	5.5	7.4	23.8	1477	14	872
235/65R16C	121/119R**	E	BLK	170207003	245651	6.5 - 7.5	7.0	9.4	28.0	3195	14	740
LT235/75R15	104/101R**	C	BLK	170194003	245519	6.0 - 7.0	6.5	9.1	28.9	1985	14	717
LT215/85R16	115/112R**	E	BLK	170197003	245522	5.5 - 7.0	6.0	8.4	30.3	2680	14	684
LT225/75R16	115/112R**	E	BLK	170189003	245437	6.0 - 7.0	6.0	8.5	29.2	2680	14	710
LT235/85R16	120/116R**	E	BLK	170192003	245517	6.0 - 7.5	6.5	9.4	31.8	3042	14	653
LT245/75R16	120/116R**	E	BLK	170196003	245521	6.5 - 8.0	7.0	9.7	30.4	3042	14	683
LT265/75R16	123/120R**	E	BLK	170202003	245527	7.0 - 8.0	7.5	10.6	31.6	3415	14	656
LT285/75R16	126/123R**	E	BLK	170201003	245526	7.5 - 9.0	8.0	11.6	32.6	3750	14	637
LT235/80R17	120/117R**	E	BLK	170193003	245518	6.0 - 7.5	6.5	9.2	31.8	3085	14	653
LT245/70R17	119/116S**	E	BLK	170191003	245516	6.5 - 8.0	7.0	9.8	30.6	3000	14	679
LT245/75R17	121/118S**	E	BLK	170203003	245528	6.5 - 7.5	7.0	10.0	31.5	3195	14	658
LT265/70R17	121/118S**	E	BLK	170190003	245515	7.0 - 8.5	8.0	10.9	31.7	3195	14	655
LT265/70R18	124/121S**	E	BLK	170188003	245435	7.0 - 9.0	8.0	10.7	32.6	3525	14	635
LT275/65R18	123/120S**	E	BLK	170198003	245523	7.5 - 9.5	8.0	11.1	32.1	3415	14	646
LT275/70R18	125/122S**	E	BLK	170199003	245524	7.0 - 8.5	8.0	11.1	33.2	3640	14	624
LT275/65R20	126/123S**	E	BLK	170204003	245665	7.5 - 9.5	8.0	11.1	34.2	3750	14	606

Do not attempt to mount 16" rim diameter tires on 16.5" rim diameter wheels; this may result in serious injury or death.

\*\*Max load decreases if tire is used in a dual application. For dual max load please refer to the tire sidewall.

NOTE: When replacing a vehicle's original equipment light truck tires with passenger car tires, the load on each replacement car tire must not exceed the maximum load stamped on the replacement car tire sidewall divided by 1.10

For more complete information, go to Tire-HQ™ at [www.tire-hq.com](http://www.tire-hq.com) or contact your Goodyear representative.

65,000 mile / 105,000 km  
LIMITED TREADWEAR WARRANTY\*

# Discoverer® Road+Trail® AT

All-Terrain

The **Cooper® Discoverer Road+Trail® AT** tire was built with increased durability, stability, and traction to handle what the road throws your way.

- A durable tread helps resist cutting, cracking, and tearing that occurs on tough trails
- Improved interlocking tread lugs increase all-season performance to help you feel confident in wet and dry conditions.
- An improved design will help you experience a smoother, quieter ride from city streets to trails.



## Limited Treadwear Warranty\*

45-DAY Test Drive\*

65,000 mile / 105,000 km



### EnduraGuard Design

A durable internal construction helps the tire keep its shape when driving over rough surfaces, giving you more even wear across the tread.

### Thick, Rugged Tread Blocks

Interlocking tread blocks help provide the grip and unwavering control you need on uneven terrain.

### Road Glide Technology

Improves the fit between the tire and wheel to encourage a smoother, more comfortable ride.



\*The Three-Peak Mountain Snowflake Designation located on the sidewall of a tire indicates a tire that meets a snow traction standard set by FMVSS (Federal Motor Vehicle Safety Standards).



### Traction Shoulders

The continuous tread pattern extends over 50% further down the sidewall than the predecessor, and the angled design is twice as thick, providing more area to grip soft or uneven surfaces.

### Winter Grip Technology

Connected center tread lugs help provide stability and traction on snowy surfaces.

ALL-TERRAIN





# Discoverer Road+Trail™ AT

Size	Service Description	Load Range	Sidewall	Product Code	Material Number	Approved Rim Widths (Inches)	Measuring Rim Width (Inches)	Section Width (Inches)	Overall Diameter (Inches)	Max Load (Lbs)	Tread Depth (in 32nds)	Revs / Mile	UTQG
<b>Discoverer Road+Trail AT</b>													
225/70R15	100T	SL	RWL	171264050	249971	6.0 - 7.5	6.5	9.0	27.4	1764	13	756	620 A B
235/75R15	109T	XL	RBL	171270049	249977	6.0 - 8.0	6.5	9.3	28.9	2271	13	718	620 A B
225/75R16	104T	SL	RBL	171265049	249972	6.0 - 7.5	6.0	8.8	29.3	1984	13	708	620 A B
235/70R16	106T	SL	RBL	171269049	249976	6.0 - 8.0	7.0	9.4	29.0	2094	13	716	620 A B
245/70R16	107T	SL	RBL	171275049	249982	6.5 - 8.0	7.0	9.8	29.5	2149	13	702	620 A B
245/75R16	111T	SL	RBL	171277049	249984	6.5 - 8.0	7.0	9.8	30.5	2403	13	680	620 A B
255/70R16	115T	XL	RWL	171281050	249988	6.5 - 8.5	7.5	10.2	30.1	2679	13	689	620 A B
265/70R16	112T	SL	RWL	171289050	249996	7.0 - 9.0	8.0	10.7	30.6	2469	13	677	620 A B
265/75R16	116T	SL	RWL	171292050	249999	7.0 - 9.0	7.5	10.5	31.7	2756	13	655	620 A B
225/60R17	103H	XL	RBL	171261049	249968	6.0 - 8.0	6.5	9.0	27.6	1929	12	750	620 A B
225/65R17	102H	SL	RBL	171263049	249970	6.0 - 8.0	6.5	9.0	28.5	1874	13	727	620 A B
235/65R17	108H	XL	RBL	171267049	249974	6.5 - 8.5	7.0	9.4	29.1	2205	13	714	620 A B
235/75R17	109T	SL	RBL	171271049	249978	6.0 - 8.0	6.5	9.3	30.9	2271	13	672	620 A B
245/65R17	111T	XL	RBL	171274049	249981	7.0 - 8.5	7.0	9.8	29.5	2403	13	702	620 A B
245/70R17	114T	XL	RBL	171276049	249983	6.5 - 8.0	7.0	9.8	30.6	2601	13	679	620 A B
245/75R17	112T	SL	RBL	171278049	249985	6.5 - 8.0	7.0	9.8	31.5	2469	13	658	620 A B
255/65R17	110T	SL	RBL	171280049	249987	7.0 - 9.0	7.5	10.2	30.1	2337	13	689	620 A B
255/70R17	112T	SL	RWL	171282050	249989	6.5 - 8.5	7.5	10.2	31.1	2469	13	667	620 A B
255/75R17	115T	SL	RWL	171284050	249991	6.5 - 8.5	7.0	10.0	32.1	2679	13	647	620 A B
265/65R17	112T	SL	RWL	171287050	249994	7.5 - 9.5	8.0	10.7	30.6	2469	13	679	620 A B
265/70R17	115T	SL	RWL	171290050	249997	7.0 - 9.0	8.0	10.7	31.5	2679	13	657	620 A B
225/60R18	104H	XL	RBL	171262049	249969	6.0 - 8.0	6.5	9.0	28.6	1984	12	724	620 A B
235/60R18	107H	XL	RBL	171266049	249973	6.5 - 8.5	7.0	9.4	29.1	2149	12	713	620 A B
235/65R18	106V	SL	RBL	171268049	249975	6.5 - 8.5	7.0	9.4	30.0	2094	11	690	620 A B
245/60R18	105H	SL	RBL	171273049	249980	7.0 - 8.5	7.0	9.8	29.6	2039	12	701	620 A B
255/70R18	116T	XL	RBL	171283049	249990	6.5 - 8.5	7.5	10.2	32.1	2756	13	646	620 A B
265/60R18	114H	XL	RBL	171286049	249993	7.5 - 9.5	8.0	10.7	30.5	2601	12	680	620 A B
265/65R18	116H	XL	RBL	171288049	249995	7.5 - 9.5	8.0	10.7	31.5	2756	13	657	620 A B
265/70R18	116H	SL	RBL	171291049	249998	7.0 - 9.0	8.0	10.7	32.6	2756	13	635	620 A B
275/65R18	116H	SL	RBL	171296049	255870	7.5 - 9.5	8.0	11.0	32.1	2756	13	646	620 A B
245/50R20	102V	SL	RBL	171272049	249979	7.0 - 8.5	7.5	10.0	29.7	1874	11	698	620 A B
255/55R20	110V	XL	RBL	171279049	249986	7.0 - 9.0	8.0	10.4	31.0	2337	11	668	620 A B
265/50R20	111V	XL	RBL	171285049	249992	7.5 - 9.5	8.5	10.9	30.5	2403	11	680	620 A B
275/55R20	117H	XL	RBL	171293049	250000	7.5 - 9.5	8.5	11.2	31.9	2833	12	650	620 A B
275/60R20	115H	SL	RBL	171294049	250001	7.5 - 9.5	8.0	11.0	33.0	2679	12	628	620 A B
285/45R22	114H	XL	RBL	171295049	250003	9.0 - 10.5	9.5	11.2	32.2	2601	12	643	620 A B

Do not attempt to mount 16" rim diameter tires on 16.5" rim diameter wheels; this may result in serious injury or death.

NOTE: When replacing a vehicle's original equipment light truck tires with passenger car tires, the load on each replacement car tire must not exceed the maximum load stamped on the replacement car tire sidewall divided by 1.10

65,000 mile / 105,000 km  
LIMITED TREADWEAR WARRANTY\*

# Discoverer® AT34S™

On-/Off-Road

The **Discoverer AT34S** with Adaptive-Traction™ Technology helps grip the surface, rocky or smooth, under the most severe weather, rain or shine.

- On-road comfort with off-road durability
- Strong grip and handling on wet roads



## Limited Treadwear Warranty\*

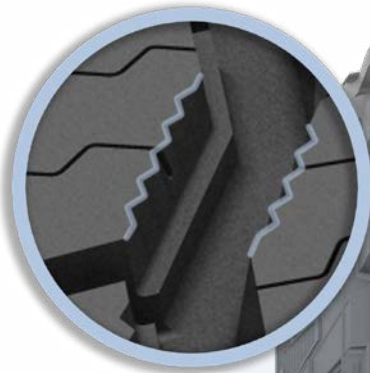
45-DAY Test Drive\*

65,000 mile / 105,000 km



## Snow-Groove™ Technology

Saw-tooth technology helps trap snow in the tread to provide superior snow-on-snow traction.



## Aqua Vac™ Channels

Uniquely shaped, deep center channels helps improve the tire's resistance to hydroplaning.

## Secure-Grip™ All-Terrain Design

Specially designed 5-rib all-terrain pattern provides greater off-road driving capability and improved wet/dry traction.

## Micro-Gauge™ Zigzag Sipes

Smaller gauge biting grooves (sipes) in all tread blocks provide increased vehicle stability and control, while reducing stone retention and drilling. Zigzags create more biting edges.

<sup>1</sup>The Three-Peak Mountain Snowflake Designation located on the sidewall of a tire indicates a tire that meets a snow traction standard set by FMVSS (Federal Motor Vehicle Safety Standards).

ALL-TERRAIN



# Discoverer® AT34S™



Size	Service Description	Load Range	Sidewall	Product Code	Material Number	Approved Rim Widths (Inches)	Measuring Rim Width (Inches)	Section Width (Inches)	Overall Diameter (Inches)	Max Load (Lbs)	Tread Depth (in 32nds)	Revs / Mile	UTQG
<b>Discoverer AT3 4S</b>													
265/70R15	112T	SL	OWL	171016010	244689	7.0 - 9.0	8.0	10.9	29.7	2469	14	699	620 A B
265/75R15	112T	SL	OWL	171018010	244690	7.0 - 9.0	7.5	10.5	30.6	2469	14	679	620 A B
235/75R16	108T	SL	OWL	171021010	244973	6.0 - 8.0	6.5	9.3	29.7	2205	14	698	620 A B
255/50R20	109H	XL	BLK	171033002	245049	7.0 - 9.0	8.0	10.4	30.1	2271	12	689	620 A B

Do not attempt to mount 16" rim diameter tires on 16.5" rim diameter wheels; this may result in serious injury or death.

NOTE: When replacing a vehicle's original equipment light truck tires with passenger car tires, the load on each replacement car tire must not exceed the maximum load stamped on the replacement car tire sidewall divided by 1.10

For more complete information, go to Tire-HQ™ at [www.tire-hq.com](http://www.tire-hq.com) or contact your Goodyear representative.

**60,000 mile / 96,000 km**  
LIMITED TREADWEAR WARRANTY\*

# Discoverer® Stronghold™ AT

All-Terrain

The **Cooper Discoverer Stronghold AT** was made to tackle difficult terrain and help your vehicle get the job done. Built with durability in mind, this tire delivers the traction you need when it matters most because tough jobs demand tough tires.

- Outperforms the Toyo Open Country A/T III:
  - in dirt handling when in 4-wheel drive<sup>1</sup>
  - in handling on wet roads<sup>1</sup>
  - when stopping on snow covered roads<sup>1</sup>



Limited Treadwear Warranty

45-DAY Test Drive\*

60,000 mile / 96,000 km



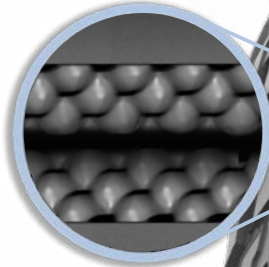
## Strength that Lasts the Test of Time

Strong shoulder design features such as scooped tread edges, wide tread grooves, and sidewall hook pattern all help provide grip and traction for the life of the tire.



## Solid Traction in Dirt and Gravel

Wide open grooves in the tread grab and release soft surfaces, while Cooper's 3D-sipe technology (pictured above) helps to provide stability.



## Great Snow Traction

Textured edges on the shoulders grab into snow to help provide traction in harsh winter conditions.

## Protection from Demanding Environments

Strategically designed tread lugs help to resist cracking, tearing, and rounding of the tread. Ledges between the lugs help prevent stones getting stuck in tread.



<sup>1</sup> Based on internal testing comparing Cooper Discoverer Stronghold AT (LT275/65R18) to Toyo Open Country A/T III (LT275/65R18) on a 2020 Chevrolet Silverado 2500 HD. Actual results may vary.

<sup>2</sup> The Three-Peak Mountain Snowflake Designation located on the sidewall of a tire indicates a tire that meets a snow traction standard set by FMVSS (Federal Motor Vehicle Safety Standards).

ALL-TERRAIN





# Discoverer® Stonghold™ AT

Size	Service Description	Load Range	Sidewall	Product Code	Material Number	Approved Rim Widths (Inches)	Measuring Rim Width (Inches)	Section Width (Inches)	Overall Diameter (Inches)	Max Load (Lbs)	Tread Depth (in 32nds)	Revs / Mile
<b>Discoverer Stronghold AT</b>												
LT225/75R16	115/112R**	E	BLK	170303048	270960	6.0 - 7.5	6.0	8.8	29.3	2680	16.5	710
LT245/75R16	120/116S**	E	BLK	170277048	262084	6.5 - 8.0	7.0	9.8	30.5	3042	16.5	683
LT265/75R16	123/120S**	E	RWL	170276047	262085	7.0 - 9.0	7.5	10.5	31.7	3415	16.5	657
LT285/75R16	126/123R**	E	RWL	170284047	270941	7.5 - 9.5	8.0	11.3	32.8	3750	17.0	634
LT235/85R16	120/116R**	E	BLK	170299048	270956	6.0 - 7.5	6.5	9.3	31.7	3042	16.5	656
LT245/70R17	119/116R**	E	BLK	170285048	270942	6.5 - 8.0	7.0	9.8	30.8	3000	16.5	676
LT265/70R17	123/120R**	E	RWL	170293047	270950	7.0 - 9.0	8.0	10.7	31.7	3415	16.5	657
LT275/70R17	124/121R**	E	BLK	170279048	262086	7.0 - 9.0	8.0	11.0	32.2	3525	16.5	646
LT285/70R17	126/123S**	E	BLK	170280048	262087	7.5 - 9.5	8.5	11.5	32.8	3750	17.0	635
LT295/70R17	128/125R**	E	RWL	170288047	270945	7.5 - 10.0	8.5	11.8	33.3	3970	17.0	624
LT315/70R17	126/123S**	E	BLK	170297048	270954	8.0 - 10.5	9.5	12.7	34.4	3750	17.0	604
LT245/75R17	121/118S**	E	BLK	170282048	262089	6.5 - 8.0	7.0	9.8	31.5	3195	16.0	660
LT285/75R17	128/125S**	E	BLK	170286048	270943	7.5 - 9.5	8.0	11.3	33.9	3970	17.0	614
LT235/80R17	120/117R**	E	BLK	170287048	270944	6.0 - 8.0	6.5	9.3	31.8	3085	16.5	654
LT265/60R18	119/116S**	E	BLK	170281048	262088	8.0 - 9.5	8.0	10.7	30.5	3000	16.0	682
LT265/65R18	122/119T**	E	BLK	170300048	270957	8.0 - 9.5	8.0	10.7	31.5	3305	16.0	659
LT275/65R18	123/120S**	E	RWL	170291047	270948	8.0 - 9.5	8.0	11.0	32.1	3415	16.0	648
LT285/65R18	125/122T**	E	BLK	170292048	270949	8.5 - 10.0	8.5	11.5	32.6	3640	16.0	639
LT265/70R18	124/121S**	E	RWL	170283047	262090	7.0 - 9.0	8.0	10.7	33.2	3525	16.5	627
LT275/70R18	125/122S**	E	RWL	170290047	270947	7.0 - 9.0	8.0	11.0	33.2	3640	16.0	627
LT295/70R18	129/126S**	E	BLK	170296048	270953	7.5 - 10.0	8.5	11.8	34.3	4080	17.0	607
LT285/75R18	129/126S**	E	BLK	170289048	270946	7.5 - 9.5	8.0	11.3	34.8	4080	17.0	597
LT275/55R20	120/117S**	E	BLK	170298048	270955	8.0 - 9.5	8.5	11.2	31.9	3085	16.0	652
LT265/60R20	121/118S**	E	BLK	170301048	270958	8.0 - 9.5	8.0	10.7	32.5	3195	16.0	640
LT275/60R20	123/120S**	E	BLK	170278048	270952	8.0 - 9.5	8.0	11.0	33.0	3415	16.0	630
LT285/60R20	125/122S**	E	BLK	170305048	270959	8.5 - 10.0	8.5	11.5	33.5	3640	16.0	622
LT275/65R20	126/123S**	E	BLK	170294048	270951	8.0 - 9.5	8.0	11.0	34.1	3750	16.0	610
35X12.50R20LT	125R	F	BLK	170304048	270961	8.5 - 11.0	10.0	12.5	34.5	3640	16.5	603

Do not attempt to mount 16" rim diameter tires on 16.5" rim diameter wheels; this may result in serious injury or death.

\*\*Max load decreases if tire is used in a dual application. For dual max load please refer to the tire sidewall.

NOTE: When replacing a vehicle's original equipment light truck tires with passenger car tires, the load on each replacement car tire must not exceed the maximum load stamped on the replacement car tire sidewall divided by 1.10

For more complete information, go to Tire-HQ™ at [www.tire-hq.com](http://www.tire-hq.com) or contact your Goodyear representative.

60,000 mile / 96,000 km  
LIMITED TREADWEAR WARRANTY\*

# Discoverer® AT3LT™ and AT3XLT™

On-/Off-Road

The **Discoverer AT3LT** and **Discoverer AT3XLT** with Durable-Tread™ Technology are built to withstand the ongoing assault from dirt and gravel.

- Designed to help prevent cutting and chipping of the tread lugs on rocky and gravel terrain
- Extreme durability for hauling



## Limited Treadwear Warranty\*

45-DAY Test Drive\*

60,000 mile / 96,000 km



## Rugged Traction Shoulders

Exclusive to the **Discoverer® AT3XLT™**, the rugged traction shoulders help provide resistance to abrasion.



## Even Wear Arc™ Technology

Tire shape engineered to strategically balance pressure at the tire-to-road contact area promoting even on-road treadwear and superior handling.



## Whisper Grooves™ Technology

The Whisper Grooves™ provides a sound barrier that reduces road noise.



## Stone Ejector Ledges

Ledges that eject stones and gravel, helping to prevent tire damage from stones. Also, helps maintain a clean tread for enhanced road traction.

¹The Three-Peak Mountain Snowflake Designation located on the sidewall of a tire indicates a tire that meets a snow traction standard set by FMVSS (Federal Motor Vehicle Safety Standards).



Size	Service Description	Load Range	Sidewall	Product Code	Material Number	Approved Rim Widths (Inches)	Measuring Rim Width (Inches)	Section Width (Inches)	Overall Diameter (Inches)	Max Load (Lbs)	Tread Depth (in 32nds)	Revs / Mile
<b>Discoverer AT3 LT</b>												
>LT215/85R16	115/112R**	E	BLK	170009030	244898	5.5 - 7.0	6.0	8.4	30.3	2680	16	684
*>LT225/75R16	115/112R**	E	BLK	170005030	244894	6.0 - 7.0	6.0	8.5	29.3	2680	16	707
*>LT235/85R16	120/116R**	E	BLK	170010030	244899	6.0 - 7.5	6.5	9.4	31.8	3042	16	653
*>LT245/70R16	118/115R**	E	OWL	170004001	244893	6.5 - 7.0	7.0	9.8	29.5	2910	16	702
*>LT245/75R16	120/116R**	E	OWL	170006001	244895	6.5 - 8.0	7.0	9.7	30.4	3042	16	683
>LT265/70R16	121/118R**	E	OWL	170002001	244926	7.0 - 8.5	8.0	10.9	30.6	3195	16	677
*>LT265/75R16	123/120R**	E	OWL	170007001	244896	7.0 - 8.0	7.5	10.6	31.6	3415	16	656
*>LT265/75R16	112/109R**	C	OWL	170008001	244897	7.0 - 8.0	7.5	10.5	31.6	2470	16	656
*>LT225/75R17	116/113R**	E	BLK	170014030	244943	6.0 - 7.5	6.0	8.7	30.4	2755	16	683
*>LT235/80R17	120/117R**	E	BLK	170021030	244950	6.0 - 7.5	6.5	9.2	31.8	3085	16	653
*>LT245/70R17	119/116S**	E	OWL	170012001	244941	6.5 - 8.0	7.0	9.8	30.6	3000	16	679
*>LT245/75R17	121/118S**	E	OWL	170015001	244944	6.5 - 7.5	7.0	10.0	31.5	3195	16	658
*>LT265/65R17	120/117R**	E	OWL	170011001	244900	7.5 - 9.5	8.0	10.7	30.5	3085	16	680
*>LT265/70R17	121/118S**	E	OWL	170003001	244880	7.0 - 8.5	8.0	10.9	31.7	3195	16	655
*>LT265/70R17	112/109S**	C	OWL	170001001	244399	7.0 - 8.5	8.0	10.6	31.6	2470	16	657
*>LT275/70R17	121/118R**	E	OWL	170013001	244942	7.0 - 8.5	8.0	11.0	32.2	3195	16	645
*LT285/65R17	121/118S**	E	OWL	170019001	244948	8.0 - 10.0	8.5	11.5	31.6	3195	16	657
*>LT265/60R18	119/116S**	E	BLK	170018030	244947	7.5 - 9.5	8.0	10.7	30.5	3000	16	680
*>LT265/65R18	122/119R**	E	BLK	170017030	244946	7.5 - 9.5	8.0	10.7	31.5	3305	16	657
*>LT275/65R18	123/120S**	E	OWL	170016001	244945	7.5 - 9.0	8.0	11.1	32.1	3415	16	646

# Discoverer® AT3XLT™

Size	Service Description	Load Range	Sidewall	Product Code	Material Number	Approved Rim Widths (Inches)	Measuring Rim Width (Inches)	Section Width (Inches)	Overall Diameter (Inches)	Max Load (Lbs)	Tread Depth (in 32nds)	Revs / Mile
<b>Discoverer AT3 XLT</b>												
*>31X10.50R15LT	109R	C	RWL	170023027	244927	7.0 - 9.0	8.5	10.6	30.2	2270	16	687
*32X11.50R15LT	113R	C	RWL	170027027	244954	8.0 - 10.0	9.0	11.6	31.4	2535	17	660
33X12.50R15LT	108R	C	RWL	170028027	244955	8.5 - 11.0	10.0	12.6	32.4	2205	17	641
*LT285/75R16	126/123R**	E	RWL	170025027	244952	7.5 - 9.0	8.0	11.6	32.6	3750	17	637
*LT295/75R16	128/125R**	E	RWL	170040027	244939	7.5 - 9.5	8.0	11.9	33.4	3970	17	622
LT315/75R16	127R	E	RWL	170029027	244956	8.0 - 11.0	8.5	12.4	34.5	3860	17	601
*LT285/70R17	121/118S**	E	BLK	170053002	245013	7.5 - 9.0	8.5	11.4	32.8	3195	17	631
*LT285/75R17	121/118S**	E	BLK	170035002	244958	7.5 - 9.5	8.0	11.5	33.8	3195	17	613
*LT295/70R17	121/118R**	E	RWL	170039027	244937	7.5 - 10.0	8.5	11.9	33.4	3195	17	622
*LT305/70R17	121/118R**	E	BLK	170033002	244930	8.0 - 9.5	9.0	12.2	33.9	3195	17	612
*LT315/70R17	121/118S**	E	BLK	170046002	244846	8.0 - 11.0	9.5	12.6	34.3	3195	17	604
*37X12.50R17LT	124R	D	BLK	170041002	244940	8.5 - 11.0	10.0	12.5	36.5	3525	18	567
*>LT265/70R18	124/121S**	E	RWL	170030027	244957	7.0 - 9.0	8.0	10.7	32.6	3525	16	635
*>LT275/70R18	125/122S**	E	RWL	170026027	244953	7.0 - 8.5	8.0	11.1	33.2	3640	16	624
*LT285/65R18	125/123S**	E	BLK	170052002	245012	8.0 - 10.0	8.5	11.6	32.6	3640	16	637
*LT285/75R18	129/126S**	E	BLK	170038002	244981	7.5 - 9.5	8.0	11.5	34.8	4080	17	595
*LT295/70R18	129/126S**	E	BLK	170034002	244971	7.5 - 10.0	8.5	12.0	34.3	4080	17	605
*35X12.50R18LT	128R	F	BLK	170049002	244849	8.5 - 11.0	10.0	12.5	35.0	3970	16	593
*>LT265/60R20	121/118R**	E	BLK	170031002	244928	7.5 - 9.5	8.0	10.7	32.5	3195	16	638
*>LT275/55R20	120/117S**	E	BLK	170022002	244864	7.5 - 9.5	8.5	11.2	31.9	3085	16	650
*>LT275/60R20	123/120S**	E	BLK	170043002	244982	7.5 - 9.5	8.0	11.0	33.0	3415	16	628
*>LT275/65R20	126/123S**	E	BLK	170044002	244983	7.5 - 9.5	8.0	11.1	34.2	3750	16	606
*>LT275/65R20	126/123S**	E	RWL	170204027	250021	7.5 - 9.5	8.0	11.1	34.2	3750	16	606
*LT285/55R20	122/119R**	E	BLK	170032002	244929	8.0 - 10.0	9.0	11.7	32.4	3305	16	641
*LT285/60R20	125/122S**	E	BLK	170042002	244991	8.0 - 10.0	8.5	11.3	33.7	3640	16	615
*LT285/65R20	127/124S**	E	BLK	170045002	244845	8.0 - 10.0	8.5	11.5	34.6	3860	16	600
*LT295/60R20	126/123S**	E	BLK	170036002	244959	8.0 - 10.0	8.5	11.5	34.1	3750	16	607
*LT305/55R20	125/122S**	F	BLK	170051002	245011	8.5 - 11.0	9.5	12.2	33.4	3640	16	622
*35X12.50R20LT	125R	F	BLK	170050002	244850	8.5 - 11.0	10.0	12.5	34.7	3640	16	598

\*Discontinued July 2023- February 2024

\*\*Max load decreases if tire is used in a dual application. For dual max load please refer to the tire sidewall.

>Marked with the Severe Snow Designation symbol

Do not attempt to mount 16" rim diameter tires on 16.5" rim diameter wheels; this may result in serious injury or death.

NOTE: When replacing a vehicle's original equipment light truck tires with passenger car tires, the load on each replacement car tire must not exceed the maximum load stamped on the replacement car tire sidewall divided by 1.10

For more complete information, go to Tire-HQ™ at [www.tire-hq.com](http://www.tire-hq.com) or contact your Goodyear representative.

60,000 mile / 96,000 km  
LIMITED TREADWEAR WARRANTY\*

# Discoverer® Rugged Trek®

On-/Off-Road

The **Discoverer Rugged Trek** tire from **Cooper®** is an all-season truck tire. Its unique Rough Terrain pattern, featuring **Stone Blockades™**, helps keep rocks and stones out of the tire and on the trail where they belong. The tire is built to provide enhanced grip on wet roads and also features **Whisper Grooves™** that block the rush of air through the tire, helping to reduce noise when on the highway.

- Two Shoulder Designs double the options for an aggressive look.
- Aggressive tread blocks designed for quiet on-road performance.



## Limited Treadwear Warranty\*

45-DAY Test Drive\*

60,000 mile / 96,000 km SUV sizes  
55,000 mile / 88,000 km Pickup Truck sizes



### Deep Tread Depths

Deep treads help grip in sticky mud and sand.

### Earth Diggers™

Large shoulder scoops and lugs combine to forcefully dig into dirt, sand and mud.

### Stone Blockades

Jutting blockades expel lodged stones and protect against sharp rocks.



### Stable Trac™ Technology

Thin grooves enhance traction for impressive on-road and rough surface control.

### Whisper Grooves Technology

Specially designed sound barrier walls reduces road noise.

<sup>1</sup>The Three-Peak Mountain Snowflake Designation located on the sidewall of a tire indicates a tire that meets a snow traction standard set by FMVSS (Federal Motor Vehicle Safety Standards).



ALL-TERRAIN

# Discoverer® Rugged Trek®

Size	Service Description	Load Range	Sidewall	Product Code	Material Number	Approved Rim Widths (Inches)	Measuring Rim Width (Inches)	Section Width (Inches)	Overall Diameter (Inches)	Max Load (Lbs)	Tread Depth (in 32nds)	Revs / Mile	UTQG
<b>Discoverer Rugged Trek</b>													
>265/70R16	112T	SL	RBL	171102005	245641	7.0 - 9.0	8.0	10.5	30.8	2469	16	674	600 A B
>265/70R17	116T	XL	RBL	171101005	245636	7.0 - 9.0	8.0	10.4	31.9	2756	16	650	600 A B
285/70R17	116T	SL	RBL	171169019	246531	7.5 - 9.5	8.5	11.6	32.8	2756	16	632	600 A B
>255/70R18	116T	XL	RBL	171104005	245647	6.5 - 8.5	7.5	10.2	32.4	2756	16	639	600 A B
>265/60R18	114T	XL	RBL	171069005	244995	7.5 - 9.5	8.0	10.6	30.8	2601	16	674	600 A B
>265/65R18	116T	XL	RBL	171066005	245645	7.5 - 9.5	8.0	10.7	31.5	2756	16	657	600 A B
>275/65R18	116T	SL	RBL	171170019	246761	7.5 - 9.5	8.0	10.9	32.4	2756	16	640	600 A B
>265/50R20	111T	XL	RBL	171110005	245648	7.5 - 9.5	8.5	10.7	30.4	2403	16	681	600 A B
>275/55R20	117T	XL	RBL	171106005	245643	7.5 - 9.5	8.5	11.1	32.2	2833	16	645	600 A B
>275/60R20	115T	SL	RBL	171107005	245638	7.5 - 9.5	8.0	10.8	33.4	2679	16	621	600 A B
285/45R22	114H	XL	RBL	171171019	246762	9.0 - 10.5	9.5	11.3	32.3	2601	16	641	600 A B
<b>Discoverer Rugged Trek LT</b>													
31X10.50R15LT	109Q	C	BSL	170272046	262003	7.0 - 9.0	8.5	10.5	30.8	2270	18	676	
LT265/70R17	121/118Q**	E	RBL	170055007	245029	7.0 - 9.0	8.0	10.6	32.0	3195	18	648	
LT285/70R17	121/118Q**	E	RBL	170056007	245030	7.5 - 9.5	8.5	11.5	33.0	3195	18	628	
LT315/70R17	121/118S**	E	RBL	170215007	246750	8.0 - 10.5	9.5	12.6	34.3	3195	18	604	
35X12.50R17LT	121Q	E	RBL	170216007	246751	8.5 - 11.0	10.0	12.9	34.5	3195	18	600	
37X12.50R17LT	124Q	D	RBL	170213007	246519	8.5 - 11.0	10.0	12.5	36.5	3525	18	567	
LT275/65R18	123/120Q**	E	RBL	170058007	245015	7.5 - 9.0	8.0	10.9	32.6	3415	18	637	
LT275/70R18	125/122Q**	E	RBL	170054007	245028	7.0 - 9.0	8.0	11.1	33.7	3640	18	616	
LT285/75R18	129/126Q**	E	BSL	170274046	262005	7.5 - 9.5	8.0	11.3	35.1	4080	18	593	
35X12.50R18LT	128Q	F	RBL	170217007	246752	8.5 - 11.0	10.0	12.5	35.0	3970	18	593	
LT265/60R20	121/118Q**	E	RBL	170062007	245019	8.0 - 9.5	8.0	10.6	32.9	3195	18	630	
LT275/65R20	126/123Q**	E	RBL	170057007	245014	8.0 - 9.5	8.0	11.5	34.7	3750	18	598	
LT285/55R20	122/119Q**	E	RBL	170061007	245018	8.5 - 10.0	9.0	11.5	32.8	3305	18	633	
LT285/65R20	127/124R**	E	BSL	170273046	262004	8.5 - 10.0	8.5	11.5	34.8	3860	18	598	
LT295/55R20	123/120Q**	E	RBL	170256036	261535	8.5 - 10.5	9.5	11.7	33.1	3415	18	627	
LT295/60R20	126/123Q**	E	RBL	170257036	261536	8.5 - 10.5	8.5	11.6	34.3	3750	18	605	
LT305/55R20	125/122Q**	F	RBL	170060007	245017	9.0 - 11.0	9.5	12.5	33.4	3640	18	620	
33X12.50R20LT	119Q	F	RBL	170220007	246755	8.5 - 11.0	10.0	12.6	32.8	3000	18	633	
35X12.50R20LT	125Q	F	RBL	170059007	245016	8.5 - 11.0	10.0	12.6	34.9	3640	18	594	
37X12.50R20LT	126Q	E	RBL	170214007	246749	8.5 - 11.0	10.0	12.4	36.5	3750	18	567	

\*\*Max load decreases if tire is used in a dual application. For dual max load please refer to the tire sidewall.

>Marked with the Severe Snow Designation symbol

Do not attempt to mount 16" rim diameter tires on 16.5" rim diameter wheels; this may result in serious injury or death.

NOTE: When replacing a vehicle's original equipment light truck tires with passenger car tires, the load on each replacement car tire must not exceed the maximum load stamped on the replacement car tire sidewall divided by 1.10

# Standard Limited WARRANTY\*

# Discoverer® S/T<sub>MAXX</sub>™

Off-Road

The **Discoverer S/T<sub>MAXX</sub>** is designed for tough terrain, including rocks and gravel, with on-road stability and performance.

- Tread design helps to prevent stone retention
- Armor Tek<sup>3</sup>® construction for added tire durability
- Cut and chip resistant tread compound/composition



45-DAY Test Drive\*



## Hybrid 4-5 Rib Design

Helps provide low noise and even wear.

## Dual-Draft and Non-Parallel Grooved Walls

Helps reduce stone retention and resist cutting and chipping.



## Stone Ejector Ribs

Helps discharge debris and resist stone retention.

<sup>1</sup>For optimum performance, winter and/or studded tires should be used in sets of four. Only new tires should be fitted with studs. Studded tires can be sold for use only where use is not prohibited by law.

ALL-TERRAIN





# Discoverer® S/T MAXX™

Size	Service Description	Load Range	Sidewall	Product Code	Material Number	Approved Rim Widths (Inches)	Measuring Rim Width (Inches)	Section Width (Inches)	Overall Diameter (Inches)	Max Load (Lbs)	Tread Depth (in 32nds)	Revs / Mile	Stud Pin Size (TSMI #)
<b>Discoverer S/T MAXX</b>													
LT225/75R16	115/112Q**	E	BLK	170063004	244996	6.0 - 7.0	6.0	8.9	29.5	2680	18	703	15
LT235/85R16	120/116Q**	E	BLK	170067004	245077	6.0 - 7.5	6.5	9.5	32.0	3042	18	649	15
LT245/75R16	120/116Q**	E	BLK	170064004	245085	6.5 - 8.0	7.0	9.7	30.7	3042	18	676	15
LT255/85R16	123/120Q**	E	BLK	170074004	245088	6.5 - 8.0	7.0	10.2	32.8	3415	18	632	15
LT265/70R16	121/118Q**	E	BLK	170094004	245119	7.0 - 8.5	8.0	10.9	30.9	3195	18	672	15
LT265/75R16	123/120Q**	E	OWL	170065032	245075	7.0 - 8.0	7.5	10.5	32.0	3415	18	648	15
LT285/75R16	126/123Q**	E	OWL	170066032	245076	7.5 - 9.0	8.0	11.7	32.9	3750	18	630	15
LT235/80R17	120/117Q**	E	BLK	170072004	245086	6.0 - 7.5	6.5	9.0	32.0	3085	18	648	15
LT245/70R17	119/116Q**	E	BLK	170084004	245108	6.5 - 8.0	7.0	9.6	30.7	3000	18	675	15
LT245/75R17	121/118Q**	E	BLK	170071004	245091	6.5 - 7.5	7.0	9.4	31.5	3195	18	657	15
LT255/80R17	121/118Q**	E	BLK	170087004	245111	6.5 - 8.5	7.0	10.2	32.8	3195	18	632	15
LT265/70R17	121/118Q**	E	OWL	170068032	245078	7.0 - 8.5	8.0	10.7	31.9	3195	18	651	15
LT275/70R17	121/118Q**	E	BLK	170083004	245107	7.0 - 8.5	8.0	11.0	32.2	3195	18	645	15
LT285/70R17	121/118Q**	E	OWL	170069032	245079	7.5 - 9.0	8.5	11.5	33.0	3195	18	628	15
LT285/75R17	121/118Q**	E	BLK	170090004	245211	7.5 - 9.5	8.0	11.1	34.1	3195	18	609	15
LT295/70R17	121/118Q**	E	BLK	170085004	245109	7.5 - 10.0	8.5	12.0	33.2	3195	18	624	15
LT315/70R17	121/118Q**	D	BLK	170077004	245101	8.0 - 11.0	9.5	12.8	34.6	3195	18	600	15
LT265/60R18	119/116Q**	E	BLK	170103004	245114	7.5 - 9.5	8.0	10.7	30.8	3000	18	674	15
LT265/65R18	122/119Q**	E	BLK	170093004	245117	7.5 - 9.5	8.0	10.7	31.8	3305	18	652	15
LT265/70R18	124/121Q**	E	BLK	170098004	245155	7.0 - 9.0	8.0	10.7	32.9	3525	18	631	15
LT275/65R18	123/120Q**	E	BLK	170086004	245110	7.5 - 9.0	8.0	10.8	32.2	3415	18	644	15
LT275/70R18	125/122Q**	E	BLK	170070004	245080	7.0 - 8.5	8.0	11.1	33.4	3640	18	621	15
LT285/65R18	125/122Q**	E	BLK	170073004	245087	8.0 - 10.0	8.5	11.8	32.8	3640	18	632	15
LT295/70R18	129/126Q**	E	BLK	170089004	245113	7.5 - 10.0	8.5	12.0	34.3	4080	18	605	15
LT305/70R18	126/123Q**	E	BLK	170078004	245102	8.5 - 10.0	9.0	12.5	35.1	3750	18	591	15
LT275/65R20	126/123Q**	E	BLK	170080004	245104	7.5 - 9.5	8.0	11.1	34.2	3750	18	607	15
LT285/60R20	125/122Q**	E	BLK	170095004	245151	8.0 - 10.0	8.5	11.3	33.6	3640	18	617	15
35X12.50R20LT	121Q	E	BLK	170081004	245105	8.5 - 11.0	10.0	12.5	34.7	3195	18	598	15
35X12.50R20LT	125Q	F	BLK	170099004	245190	8.5 - 11.0	10.0	12.5	34.7	3640	18	598	15

\*\*Max load decreases if tire is used in a dual application. For dual max load please refer to the tire sidewall.

Do not attempt to mount 16" rim diameter tires on 16.5" rim diameter wheels; this may result in serious injury or death.

NOTE: When replacing a vehicle's original equipment light truck tires with passenger car tires, the load on each replacement car tire must not exceed the maximum load stamped on the replacement car tire sidewall divided by 1.10

For optimum performance, studded tires should be used in sets of four. Only new tires should be fitted with studs. Studded tires can be sold for use only where use is not prohibited by law.

# Standard Limited WARRANTY\*

# Discoverer® STT Pro™

## Off-Road

The **Discoverer STT Pro** tire delivers off-road performance, empowering the extreme off-roader to take on the toughest challenges.

- Patented Armor Tek3® tire technology adds strength to the tire sidewall
- Rubber formulated to combat shredding and damage from stones and off-road obstacles
- Tread pattern designed to help get you through extreme off-road trails



45-DAY Test Drive\*



### Mud Slingers™ 2.0

Deep, wide trenches with additional notches to help power through mud and help continuously clear mud from the tread.

### Earth Diggers™ Technology

Tackle tricky terrain with large blocks with alternating mud scoops that forcefully dig into loose dirt, sand or mud.

### Rock Climber Sidewall™ Technology

Tackle tough obstacles with deep “climber cleats” and flex grooves built into the side of the tire that grip jagged rocks and power through mud.

### Stone Armor™ Technology

Provides the ultimate durability with channels, ridges, and edges designed to help defend against sharp rocks and debris while expelling lodged stones.

ALL-TERRAIN



# Discoverer® STT Pro™

Size	Service Description	Load Range	Sidewall	Product Code	Material Number	Approved	Measuring Rim Width (Inches)	Section Width (Inches)	Overall Diameter (Inches)	Max Load (Lbs)	Tread Depth (in 32nds)	Revs / Mile
						Rim Widths (Inches)						
<b>Discoverer STT Pro</b>												
*30X9.50R15LT	104Q	C	RWL	170122034	245210	6.5 - 8.5	7.5	9.6	29.6	1985	19	701
31X10.50R15LT	109Q	C	RWL	170110034	245197	7.0 - 9.0	8.5	10.7	30.8	2270	20	674
32X11.50R15LT	113Q	C	RWL	170130034	245228	8.0 - 10.0	9.0	11.7	31.6	2535	20	657
33X12.50R15LT	108Q	C	RWL	170107034	245070	8.5 - 11.0	10.0	12.2	32.7	2205	21	634
35X12.50R15LT	113Q	C	RWL	170113034	245201	8.5 - 11.0	10.0	13.1	34.6	2535	21	600
*LT215/85R16	115/112Q**	E	BLK	170126006	245224	5.5 - 7.0	6.0	8.5	30.6	2680	18	678
LT235/85R16	120/116Q**	E	BLK	170109006	245196	6.0 - 7.5	6.5	9.6	31.9	3042	18	650
LT245/75R16	120/116Q**	E	BLK	170112006	245200	6.5 - 8.0	7.0	9.6	30.7	3042	18	675
LT265/75R16	123/120Q**	E	RWL	170106034	245069	7.0 - 8.0	7.5	10.7	31.9	3415	18	650
LT285/75R16	126/123Q**	E	RWL	170108034	245195	7.5 - 9.0	8.0	11.2	33.0	3750	19	628
LT305/70R16	124/121Q**	E	RWL	170120034	245208	8.0 - 9.5	9.0	12.3	33.0	3525	19	628
LT315/75R16	127/124Q**	E	RWL	170117034	245205	8.0 - 11.0	8.5	12.6	34.5	3860	20	600
LT315/75R16	127/124Q**	E	RWL	170310034	271617	8.0 - 11.0	8.5	12.6	34.5	3860	21	600
LT265/70R17	121/118Q**	E	RWL	170102034	244997	7.0 - 8.5	8.0	10.7	31.9	3195	18	649
LT285/70R17	121/118Q**	E	RWL	170114034	245202	7.5 - 9.0	8.5	11.5	33.0	3195	19	628
LT285/70R17	121/118Q**	E	RWL	170306034	271545	7.5 - 9.0	8.5	11.5	33.0	3195	18	628
LT295/70R17	121/118Q**	E	RWL	170115034	245203	7.5 - 10.0	8.5	12.0	33.5	3195	21	620
LT305/65R17	121/118Q**	E	BLK	170136006	245302	8.5 - 11.0	9.0	12.3	32.7	3195	21	634
LT315/70R17	121/118Q**	E	RWL	170119034	245207	8.0 - 11.0	9.5	12.6	34.6	3195	21	600
*37X12.50R17LT	124Q	D	BLK	170129006	245227	8.5 - 11.0	10.0	13.0	36.8	3525	22	564
35X12.50R17LT	121Q	E	RWL	170255034	254421	8.5 - 11.0	10.0	12.6	34.6	3195	21	600
37X12.50R17LT	124Q	D	BLK	170308006	271611	8.5 - 11.0	10.0	13.0	36.8	3525	21	564
*40X13.50R17LT	121Q	C	BLK	170142006	245355	8.5 - 11.0	11.0	13.6	39.8	3195	22	521
37X13.50R17LT	121Q	E	BLK	170137006	245304	8.5 - 11.0	11.0	13.3	36.8	3195	22	564
40X13.50R17LT	121Q	C	BLK	170307006	271548	8.5 - 11.0	11.0	13.6	39.8	3195	21	521
LT275/65R18	123/120Q**	E	RWL	170121034	245209	7.5 - 9.0	8.0	10.9	32.3	3415	19	642
LT275/70R18	125/122P**	E	RWL	170111034	245199	7.0 - 9.0	8.0	11.3	33.3	3640	20	622
LT285/65R18	125/122Q**	E	RWL	170118034	245206	8.0 - 10.0	8.5	11.8	32.9	3640	19	630
LT295/70R18	129/126P**	E	RWL	170145034	245367	7.5 - 10.0	8.5	12.0	34.5	4080	21	601
LT305/60R18	121/118Q**	E	RWL	170123034	245221	8.5 - 11.0	9.0	12.0	32.7	3195	21	634
LT305/60R18	126/123Q**	F	RWL	170147034	245375	8.5 - 11.0	9.0	12.0	32.7	3750	21	634
LT305/70R18	126/123Q**	E	RWL	170125034	245223	8.5 - 10.0	9.0	12.4	35.1	3750	21	591
LT325/65R18	127/124Q**	E	RWL	170124034	245222	9.0 - 12.0	9.5	13.7	34.7	3860	21	598
35X12.50R18LT	118Q	D	BLK	170229006	246689	8.5 - 11.0	10.0	12.7	34.6	2910	21	599
37X13.50R18LT	124Q	D	BLK	170139006	245310	8.5 - 11.0	11.0	13.3	36.8	3525	22	564
LT275/65R20	126/123Q**	E	BLK	170127006	245225	7.5 - 9.5	8.0	10.9	34.5	3750	19	601
LT295/55R20	123/120Q**	E	BLK	170135006	245301	8.0 - 10.0	9.5	12.3	33.1	3415	20	627
LT295/60R20	126/123Q**	E	BLK	170104006	245067	8.0 - 10.0	8.5	11.5	34.3	3750	19	605
LT295/65R20	129/126Q**	E	BLK	170105006	245068	8.0 - 10.0	8.5	11.7	35.4	4080	19	585
LT305/55R20	125/122Q**	F	BLK	170146006	245371	8.5 - 11.0	9.5	12.4	33.5	3640	20	619
33X12.50R20LT	119Q	F	BLK	170230006	246690	8.5 - 11.0	10.0	12.5	32.8	3000	21	633
35X12.50R20LT	121Q	E	BLK	170128006	245226	8.5 - 11.0	10.0	12.4	34.7	3195	21	598
35X12.50R20LT	125Q	F	BLK	170148006	245382	8.5 - 11.0	10.0	12.4	34.7	3640	21	598
37X12.50R20LT	126Q	E	BLK	170138006	245307	8.5 - 11.0	10.0	12.6	36.7	3750	21	565
37X12.50R20LT	126Q	E	BLK	170309006	271614	8.5 - 11.0	10.0	12.6	36.7	3750	21	565
35X13.50R20LT	121Q	E	BLK	170141006	245352	8.5 - 11.0	11.0	13.2	34.6	3195	21	600
37X13.50R20LT	127Q	E	BLK	170134006	245246	8.5 - 12.0	11.0	13.3	36.9	3860	21	563
38X13.50R20LT	123Q	D	BLK	170143006	245359	8.5 - 11.0	11.0	13.6	38.2	3415	21	543
38X15.50R20LT	128Q	E	BLK	170144006	245364	11.0 - 13.0	12.0	15.4	37.8	3970	21	548
35X12.50R22LT	121Q	F	BLK	170231006	246691	8.5 - 11.0	10.0	12.3	34.8	3195	21	596
37X13.50R22LT	123Q	E	BLK	170140006	245351	8.5 - 12.0	11.0	13.4	36.9	3415	21	562

\*Discontinued July 2023- February 2024

\*\*Max load decreases if tire is used in a dual application. For dual max load please refer to the tire sidewall.

Do not attempt to mount 16" rim diameter tires on 16.5" rim diameter wheels; this may result in serious injury or death.

NOTE: When replacing a vehicle's original equipment light truck tires with passenger car tires, the load on each replacement car tire must not exceed the maximum load stamped on the replacement car tire sidewall divided by 1.10

For more complete information, go to Tire-HQ™ at [www.tire-hq.com](http://www.tire-hq.com) or contact your Goodyear representative.

# Standard Limited WARRANTY\*

# Evolution M/T™

Off-Road

The **Evolution M/T** tire gives you the confidence to power through mud and tackle dirt roads.

- Bold tread pattern designed to tackle mud with enhanced traction
- Help prevent damage from gravel and debris
- Studdable for extra traction in winter weather



45-DAY Test Drive\*



## Earth Diggers™ Technology

Tackle tricky terrain with large blocks with alternating mud scoops that forcefully dig into loose dirt, sand or sticky mud.

## Mud Slingers™ Technology

Get extra grip from the deep, wide trenches that are designed to clear thick mud from the tire.

## Stone Barriers

Boost durability with Stone Barriers featuring ridges designed to help protect against damage from sharp rocks and expel lodged stones.

## Trail Grip Sidewall™ Technology

Power over trail obstacles with “climbers” that grab onto rocks and sticks, providing strong resistance to rubbing.



<sup>1</sup>For optimum performance, winter and/or studded tires should be used in sets of four. Only new tires should be fitted with studs. Studded tires can be sold for use only where use is not prohibited by law.



# Evolution M/T™



Size	Service Description	Load Range	Sidewall	Product Code	Material Number	Approved Rim Widths (Inches)	Measuring Rim Width (Inches)	Section Width (Inches)	Overall Diameter (Inches)	Max Load (Lbs)	Tread Depth (in 32nds)	Revs / Mile	Stud Pin Size (TSMI #)
<b>Evolution M/T</b>													
31X10.50R15LT	109Q	C	OWL	170165035	245212	7.0 - 9.0	8.5	10.9	30.6	2270	19	677	15
33X12.50R15LT	108Q	C	OWL	170167035	245214	8.5 - 11.0	10.0	12.1	32.8	2205	20	631	17
35X12.50R15LT	113Q	C	OWL	170166035	245213	8.5 - 11.0	10.0	12.2	34.7	2535	20	597	17
LT265/75R16	123/120Q**	E	OWL	170160035	244998	7.0 - 8.0	7.5	10.1	31.7	3415	18	653	15
LT285/75R16	126/123Q**	E	OWL	170161035	245183	7.5 - 9.0	8.0	11.3	32.8	3750	18	631	15
LT265/70R17	121/118Q**	E	OWL	170162035	245184	7.0 - 8.5	8.0	10.8	31.7	3195	18	653	15
LT285/70R17	121/118Q**	E	OWL	170163035	245185	7.5 - 9.0	8.5	11.5	32.9	3195	18	630	15
LT295/70R17	121/118Q**	E	OWL	170164035	245186	7.5 - 10.0	8.5	11.8	33.5	3195	19	620	15
35X12.50R17LT	121Q	E	OWL	170170035	245217	8.5 - 11.0	10.0	12.7	34.8	3195	20	596	17
LT275/70R18	125/122Q**	E	OWL	170168035	245215	7.0 - 8.5	8.0	11.0	33.3	3640	19	622	15
LT295/70R18	129/126Q**	E	BLK	170171008	245218	7.5 - 10.0	8.5	12.0	34.3	4080	19	605	15
35X12.50R20LT	121Q	E	BLK	170169008	245216	8.5 - 11.0	10.0	12.5	34.7	3195	20	598	17

\*\*Max load decreases if tire is used in a dual application. For dual max load please refer to the tire sidewall.

Do not attempt to mount 16" rim diameter tires on 16.5" rim diameter wheels; this may result in serious injury or death.

NOTE: When replacing a vehicle's original equipment light truck tires with passenger car tires, the load on each replacement car tire must not exceed the maximum load stamped on the replacement car tire sidewall divided by 1.10

For optimum performance, studded tires should be used in sets of four. Only new tires should be fitted with studs. Studded tires can be sold for use only where use is not prohibited by law.

For more complete information, go to Tire-HQ™ at [www.tire-hq.com](http://www.tire-hq.com) or contact your Goodyear representative.

# WINTER

---



**Discoverer®  
Snow Claw®**

**Discoverer®  
True North**

**Cooper  
Evolution®  
Winter**

# 2024 COOPER® WINTER TIRE SELECTOR CHART

	SUV/Light Truck	Winter Auto	
	Discoverer Snow Claw Discoverer Snow Claw LT	Discoverer True North	Evolution Winter
185/65R15			T
195/65R15		T	T
235/75R15			T
195/75R16C	C		
205/55R16		H	H
205/60R16		H	T
205/65R16			T
215/55R16		H	T
215/60R16		H	H
215/65R16			T
215/70R16			T
225/60R16			H
225/65R16		T	T
225/70R16			T
235/65R16			T
235/65R16C	C		
235/70R16			T
265/70R16	T		
205/50R17			H
215/45R17		H	H
215/50R17			H
215/55R17		H	H
215/60R17			T
215/65R17			T
225/45R17		H	T
225/50R17		H	H
225/55R17		H	T
225/60R17		T	T
225/65R17		T	T
235/55R17		H	H
235/60R17		T	T
235/65R17		T	T
245/65R17		T	
245/70R17		T	
255/70R17	T		
265/70R17	T		
215/55R18			T
225/45R18		H	H
225/50R18			T

	SUV/Light Truck	Winter Auto	
	Discoverer Snow Claw Discoverer Snow Claw LT	Discoverer True North	Evolution Winter
225/55R18		H	T
225/60R18		T	H
235/45R18		H	
235/50R18		H	T
235/55R18		H	H
235/60R18		T	T
235/65R18		T	T
245/45R18		H	T
245/55R18		H	
245/60R18		T	T
255/65R18		T	T
265/60R18		T	T
265/65R18		T	T
275/65R18	T		
235/55R19		H	T
245/55R19		T	T
235/55R20		H	
245/50R20		H	T
255/50R20			H
255/55R20			T
265/50R20		T	H
275/55R20	T		
275/60R20	T		
285/45R22	T		
LT225/75R16	E		
LT245/75R16	E		
LT265/75R16	E		
LT285/75R16	E		
LT235/80R17	E		
LT245/70R17	E		
LT245/75R17	E		
LT265/70R17	E		
LT285/70R17	E		
LT265/70R18	E		
LT275/65R18	E		
LT275/70R18	E		
LT265/60R20	E		
LT275/65R20	E		

Size chart includes active products only as of February 2024

# Standard Limited WARRANTY\*

SUV/Light Truck

# Discoverer® Snow Claw™

The **Discoverer Snow Claw** truck and SUV tire is designed to put some extra “Grrr” in grip, staying flexible when the weather turns bitter, to give you the grip you need in the cold.

- A truck and SUV tire specially designed to help you handle extreme winter conditions
- Studdable for extreme traction



45-DAY Test Drive\*



## Snow-Groove™ Technology

The Discoverer Snow Claw tire features our Snow-Groove™ Technology, which adds some teeth to the claws. Helping trap snow and using that trapped snow for greater traction, handling and stopping power.



## Winter-Grip Tread Compound

Made to stay supple and flexible when weather turns bitter.

## Extreme Ice Traction

Compatible with the extra confidence of studs. It's like putting claws on claws.

¹For optimum performance, winter and/or studded tires should be used in sets of four. Only new tires should be fitted with studs. Studded tires can be sold for use only where use is not prohibited by law.

²The Three-Peak Mountain Snowflake Designation located on the sidewall of a tire indicates a tire that meets a snow traction standard set by FMVSS (Federal Motor Vehicle Safety Standards).

WINTER





# Discoverer® Snow Claw™

Size	Service Description	Load Range	Sidewall	Product Code	Material Number	Approved		Section Width (Inches)	Overall Diameter (Inches)	Max Load (Lbs)	Tread Depth (in 32nds)	Revs / Mile	Stud Pin Size (TSMI #)
						Rim Widths (Inches)	Measuring Rim Width (Inches)						
<b>Discoverer Snow Claw</b>													
265/70R16	112T	SL	BLK	171102004	245417	7.0 - 9.0	8.0	10.7	30.6	2469	13	678	12
255/70R17	112T	SL	BLK	171103004	245418	6.5 - 8.5	7.5	10.3	31.3	2469	13	662	12
265/70R17	115T	SL	BLK	171101004	245440	7.0 - 9.0	8.0	10.6	31.6	2679	13	656	12
275/65R18	116T	SL	BLK	171105004	245419	7.5 - 9.5	8.0	10.9	32.2	2756	12	644	12
275/55R20	117T	XL	BLK	171106004	245420	7.5 - 9.5	8.5	11.0	32.0	2833	12	648	12
275/60R20	115T	SL	BLK	171107004	245611	7.5 - 9.5	8.0	10.8	33.1	2679	12	627	12
285/45R22	114T	XL	BLK	171108004	245612	9.0 - 10.5	9.5	11.3	32.2	2601	12	644	12
195/75R16C	110/108R**	D	BLK	170185005	245317	5.0 - 6.0	5.5	7.5	27.7	2337	13	748	12
235/65R16C	121/119R**	E	BLK	170184005	245316	6.5 - 7.5	7.0	9.4	28.2	3195	13	734	12
LT225/75R16	115/112Q**	E	BLK	170172005	244999	6.0 - 7.0	6.0	8.6	29.5	2680	16	703	12
LT245/75R16	120/116R**	E	BLK	170173005	245255	6.5 - 8.0	7.0	9.7	30.6	3042	16	679	12
LT265/75R16	123/120R**	E	BLK	170174005	245303	7.0 - 8.0	7.5	10.4	31.8	3415	16	653	12
LT285/75R16	126/123R**	E	BLK	170175005	245305	7.5 - 9.0	8.0	11.3	32.9	3750	17	630	13
LT235/80R17	120/117Q**	E	BLK	170179005	245311	6.0 - 7.5	6.5	9.1	32.0	3085	16	649	12
LT245/70R17	119/116R**	E	BLK	170176005	245306	6.5 - 8.0	7.0	9.6	30.8	3000	16	673	12
LT245/75R17	121/118Q**	E	BLK	170178005	245309	6.5 - 7.5	7.0	9.7	31.8	3195	16	653	12
LT265/70R17	121/118R**	E	BLK	170177005	245308	7.0 - 8.5	8.0	10.7	31.9	3195	16	650	12
LT285/70R17	121/118R**	E	BLK	170186005	245318	7.5 - 9.0	8.5	11.7	33.1	3195	17	626	13
LT265/70R18	124/121Q**	E	BLK	170183005	245315	7.0 - 9.0	8.0	10.7	33.0	3525	16	629	13
LT275/65R18	123/120R**	E	BLK	170180005	245312	7.5 - 9.0	8.0	10.9	32.2	3415	16	644	12
LT275/70R18	125/122R**	E	BLK	170181005	245313	7.0 - 8.5	8.0	11.1	33.4	3640	16	622	12
LT265/60R20	121/118R**	E	BLK	170187005	245319	8.0 - 9.5	8.0	10.6	32.7	3195	16	634	13
LT275/65R20	126/123R**	E	BLK	170182005	245314	7.5 - 9.5	8.0	10.9	34.5	3750	16	601	13

\*\*Max load decreases if tire is used in a dual application. For dual max load please refer to the tire sidewall.

Do not attempt to mount 16" rim diameter tires on 16.5" rim diameter wheels; this may result in serious injury or death.

NOTE: When replacing a vehicle's original equipment light truck tires with passenger car tires, the load on each replacement car tire must not exceed the maximum load stamped on the replacement car tire sidewall divided by 1.10

For optimum performance, studded tires should be used in sets of four. Only new tires should be fitted with studs. Studded tires can be sold for use only where use is not prohibited by law.

Standard Limited  
**WARRANTY\***

# Discoverer® True North™

Winter Auto

The **Discoverer True North** is designed for exceptional traction in unpredictable winter weather conditions. Developed for drivers who want performance on highway commutes in winter weather, where slush and ice can be a common occurrence.



45-DAY Test Drive\*



### Outboard Tread

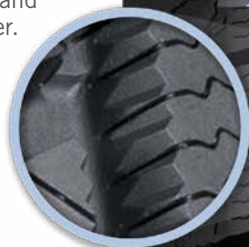
Provides exceptional slush and water evacuation.

### Inboard Tread

Provides more rubber on the road to help grip ice.

### Snow-Groove™ Technology

Traps snow for greater traction, handling and stopping power.



### Tread Compound

Enhances traction on ice.

### High Density Siping

More biting grooves help provide grip and traction in winter and snow.

<sup>1</sup>The Three-Peak Mountain Snowflake Designation located on the sidewall of a tire indicates a tire that meets a snow traction standard set by FMVSS (Federal Motor Vehicle Safety Standards).

**WINTER**



# Discoverer® True North™

Size	Service Description	Load Range	Sidewall	Product Code	Material Number	Approved Rim Widths (Inches)	Measuring Rim Width (Inches)	Section Width (Inches)	Overall Diameter (Inches)	Max Load (Lbs)	Tread Depth (in 32nds)	Revs / Mile
<b>Discoverer True North</b>												
195/65R15	91T	SL	BLK	166211004	245433	5.5 - 7.0	6.0	7.9	25.0	1356	10	829
205/55R16	91H	SL	BLK	166196004	245429	5.5 - 7.5	6.5	8.4	24.9	1356	10	833
205/60R16	92H	SL	BLK	166179004	245426	5.5 - 7.5	6.0	8.2	25.7	1389	10	808
215/55R16	97H	XL	BLK	166208004	245493	6.0 - 7.5	7.0	8.9	25.3	1609	10	820
215/60R16	95H	SL	BLK	166181004	245299	6.0 - 7.5	6.5	8.7	26.1	1521	10	793
225/65R16	100T	SL	BLK	166184004	245452	6.0 - 8.0	6.5	9.0	27.5	1764	10	754
215/45R17	91H	XL	BLK	166180004	245298	7.0 - 8.0	7.0	8.4	24.7	1356	10	841
215/55R17	94H	SL	BLK	166197004	245392	6.0 - 7.5	7.0	8.9	26.3	1477	10	788
225/45R17	94H	XL	BLK	166213004	245505	7.0 - 8.5	7.5	8.9	25.0	1477	10	831
225/50R17	98H	XL	BLK	166209004	245494	6.0 - 8.0	7.0	9.2	25.9	1653	10	800
225/55R17	97H	SL	BLK	166182004	245300	6.0 - 8.0	7.0	9.2	26.8	1609	10	774
225/60R17	99T	SL	BLK	166183004	245451	6.0 - 8.0	6.5	8.9	27.6	1709	10	750
225/65R17	102T	SL	BLK	166199004	245394	6.0 - 8.0	6.5	8.9	28.5	1874	10	726
235/55R17	99H	SL	BLK	166202004	245397	6.5 - 8.5	7.5	9.6	27.2	1709	10	763
235/60R17	102T	SL	BLK	166186004	245453	6.5 - 8.5	7.0	9.4	28.1	1874	10	738
235/65R17	104T	SL	BLK	166187004	245454	6.5 - 8.5	7.0	9.4	29.1	1984	10	714
245/65R17	107T	SL	BLK	166188004	245455	7.0 - 8.5	7.0	9.8	29.5	2149	10	702
245/70R17	110T	SL	BLK	166189004	245456	6.5 - 8.0	7.0	9.8	30.6	2337	10	679
225/45R18	95H	XL	BLK	166191004	245458	7.0 - 8.5	7.5	9.2	25.9	1521	10	799
225/55R18	98H	SL	BLK	166214004	245506	6.0 - 8.0	7.0	9.2	27.8	1653	10	747
225/60R18	100T	SL	BLK	166198004	245393	6.0 - 8.0	6.5	9.0	28.6	1764	10	724
235/45R18	98H	XL	BLK	166200004	245395	7.5 - 9.0	8.0	9.3	26.3	1653	10	787
235/50R18	97H	SL	BLK	166201004	245396	6.5 - 8.5	7.5	9.6	27.3	1609	10	760
235/55R18	100H	SL	BLK	166192004	245459	6.5 - 8.5	7.5	9.6	28.2	1764	10	737
235/60R18	107T	XL	BLK	166204004	245399	6.5 - 8.5	7.0	9.3	29.1	2149	10	712
235/65R18	106T	SL	BLK	166205004	245400	6.5 - 8.5	7.0	9.3	30.1	2094	10	689
245/45R18	100H	XL	BLK	166193004	245460	7.5 - 9.0	8.0	9.6	26.7	1764	10	778
245/55R18	103H	SL	BLK	166210004	245495	7.0 - 8.5	7.5	10.0	28.6	1929	10	724
245/60R18	105T	SL	BLK	166207004	245492	7.0 - 8.5	7.0	9.8	29.6	2039	10	701
255/65R18	111T	SL	BLK	166190004	245457	7.0 - 9.0	7.5	10.2	31.1	2403	10	667
265/60R18	110T	SL	BLK	166212004	245504	7.5 - 9.5	8.0	10.7	30.5	2337	10	680
265/65R18	114T	SL	BLK	166195004	245462	7.5 - 9.5	8.0	10.7	31.5	2601	10	657
235/55R19	105H	XL	BLK	166203004	245398	6.5 - 8.5	7.5	9.8	29.5	2039	10	704
245/55R19	103T	SL	BLK	166206004	245491	7.0 - 8.5	7.5	10.0	29.7	1929	10	699
235/55R20	102H	SL	BLK	166216004	245508	6.5 - 8.5	7.5	9.6	30.2	1874	10	687
245/50R20	102H	SL	BLK	166215004	245507	7.0 - 8.5	7.5	10.0	29.7	1874	10	698
265/50R20	107T	SL	BLK	166194004	245461	7.5 - 9.5	8.5	10.9	30.5	2149	10	680

Do not attempt to mount 16" rim diameter tires on 16.5" rim diameter wheels; this may result in serious injury or death.

For optimum performance, winter tires should be used in sets of four.

For more complete information, go to Tire-HQ™ at [www.tire-hq.com](http://www.tire-hq.com) or contact your Goodyear representative.

# Standard Limited WARRANTY\*

# Evolution Winter™

## Winter Auto

The **Evolution Winter** is a studdable tire designed for excellent performance in variable winter conditions, and with outstanding snow traction.

- Powers through snow
- Studdable for improved ice traction



45-DAY Test Drive\*



### Sawtooth Center Rib

The wide contact of the center rib enhances stability in all weather conditions.

### Snow-Groove™ Technology

Traps snow for greater traction, handling and stopping power.

### Multi-Angled Corrugated Siping

Lots of biting edges in every direction to provide grip and traction on straightaways, or when turning.

### Stud Pin Capable

Strategically-placed stud pin holes provide additional traction and stopping capability on ice when properly fitted with metal stud pins.



¹For optimum performance, winter and/or studded tires should be used in sets of four. Only new tires should be fitted with studs. Studded tires can be sold for use only where use is not prohibited by law.

²The Three-Peak Mountain Snowflake Designation located on the sidewall of a tire indicates a tire that meets a snow traction standard set by FMVSS (Federal Motor Vehicle Safety Standards).

WINTER





# Evolution Winter™

Size	Service Description	Load Range	Sidewall	Product Code	Material Number	Approved		Section Width (Inches)	Overall Diameter (Inches)	Max Load (Lbs)	Tread Depth (in 32nds)	Revs / Mile	Stud Pin Size (TSMI #)
						Rim Widths (Inches)	Measuring Rim Width (Inches)						
<b>Evolution Winter</b>													
185/65R15	88T	SL	BLK	166131006	245247	5.0 - 6.5	5.5	7.6	24.5	1235	12	845	12
195/65R15	95T	XL	BLK	166127006	245241	5.5 - 7.0	6.0	7.8	25.0	1521	12	829	12
235/75R15	109T	XL	BLK	166114006	244967	6.0 - 8.0	6.5	9.3	28.9	2271	12	718	12
205/55R16	94H	XL	BLK	166115006	245198	5.5 - 7.5	6.5	8.3	24.8	1477	12	836	12
205/60R16	92T	SL	BLK	166133006	245249	5.5 - 7.5	6.0	8.3	25.8	1389	12	804	12
205/65R16	95T	SL	BLK	166118006	245231	5.5 - 7.5	6.0	8.0	26.5	1521	12	784	12
215/55R16	97T	XL	BLK	166136006	245272	6.0 - 7.5	7.0	8.9	25.4	1609	12	818	12
215/60R16	95H	SL	BLK	166116006	245229	6.0 - 7.5	6.5	8.5	26.1	1521	12	793	12
215/65R16	98T	SL	BLK	166140006	245327	6.0 - 7.5	6.5	8.5	27.0	1653	12	769	12
215/70R16	100T	SL	BLK	166148006	245381	5.5 - 7.0	6.5	8.7	27.9	1764	12	744	12
225/60R16	98H	SL	BLK	166117006	245230	6.0 - 8.0	6.5	9.0	26.9	1653	12	770	12
225/65R16	100T	SL	BLK	166149006	245093	6.0 - 8.0	6.5	8.9	27.5	1764	12	754	12
225/70R16	103T	SL	BLK	166150006	245094	6.0 - 7.5	6.5	8.9	28.5	1929	12	727	12
235/65R16	103T	SL	BLK	166156006	245100	6.5 - 8.5	7.0	9.6	28.0	1929	12	742	12
235/70R16	106T	SL	BLK	166121006	245234	6.0 - 8.0	7.0	9.4	28.9	2094	12	718	12
205/50R17	93H	XL	BLK	166126006	245239	5.5 - 7.5	6.5	8.3	25.3	1433	12	820	12
215/45R17	91H	XL	BLK	166119006	245232	7.0 - 8.0	7.0	8.4	24.7	1356	12	841	12
215/50R17	95H	XL	BLK	166124006	245236	6.0 - 7.5	7.0	8.8	25.7	1521	12	806	12
215/55R17	94H	SL	BLK	166137006	245273	6.0 - 7.5	7.0	9.4	26.4	1477	12	786	12
215/60R17	96T	SL	BLK	166139006	245275	6.0 - 7.5	6.5	9.0	27.2	1565	12	761	12
215/65R17	99T	SL	BLK	166141006	245347	6.0 - 7.5	6.5	8.9	28.1	1709	12	738	12
225/45R17	94T	XL	BLK	166130006	245245	7.0 - 8.5	7.5	9.0	25.1	1477	12	827	12
225/50R17	94H	SL	BLK	166145006	245353	6.0 - 8.0	7.0	9.0	26.0	1477	12	798	12
225/55R17	97T	SL	BLK	166146006	245354	6.0 - 8.0	7.0	9.2	26.9	1609	12	771	12
225/60R17	99T	SL	BLK	166147006	245380	6.0 - 8.0	6.5	9.1	27.7	1709	12	748	12
225/65R17	102T	SL	BLK	166120006	245233	6.0 - 8.0	6.5	8.9	28.5	1874	12	727	12
235/55R17	99H	SL	BLK	166152006	245096	6.5 - 8.5	7.5	9.8	27.2	1709	12	762	12
235/60R17	102T	SL	BLK	166155006	245099	6.5 - 8.5	7.0	9.4	28.1	1874	12	738	12
235/65R17	104T	SL	BLK	166157006	245391	6.5 - 8.5	7.0	9.4	28.9	1984	12	718	12
215/55R18	95T	SL	BLK	166175006	245362	6.0 - 7.5	7.0	8.9	27.3	1521	12	760	12
225/45R18	95H	XL	BLK	166144006	245349	7.0 - 8.5	7.5	9.0	25.9	1521	12	799	12
225/50R18	95T	SL	BLK	166165006	245376	6.0 - 8.0	7.0	9.2	26.9	1521	12	771	12
225/55R18	98T	SL	BLK	166169006	245350	6.0 - 8.0	7.0	9.2	27.8	1653	12	747	12
225/60R18	100H	SL	BLK	166158006	245368	6.0 - 8.0	6.5	9.0	28.6	1764	12	724	12
235/50R18	97T	SL	BLK	166161006	245372	6.5 - 8.5	7.5	9.6	27.3	1609	12	760	12
235/55R18	100H	SL	BLK	166153006	245097	6.5 - 8.5	7.5	9.0	28.7	1764	12	722	12
235/60R18	103T	SL	BLK	166159006	245369	6.5 - 8.5	7.0	9.4	29.1	1929	12	713	12
235/65R18	106T	SL	BLK	166162006	245373	6.5 - 8.5	7.0	9.4	30.0	2094	12	690	12
245/45R18	100T	XL	BLK	166168006	245379	7.5 - 9.0	8.0	9.6	26.7	1764	14	778	12
245/60R18	105T	SL	BLK	166160006	245370	7.0 - 8.5	7.0	9.8	29.6	2039	14	701	12
255/65R18	111T	SL	BLK	166173006	245360	7.0 - 9.0	7.5	10.2	31.1	2403	14	667	12
265/60R18	110T	SL	BLK	166167006	245378	7.5 - 9.5	8.0	10.7	30.5	2337	14	680	12
265/65R18	114T	SL	BLK	166171006	245357	7.5 - 9.5	8.0	10.7	31.5	2601	14	657	12
235/55R19	105T	XL	BLK	166163006	245374	6.5 - 8.5	7.5	9.6	29.2	2039	12	711	12
245/55R19	103T	SL	BLK	166166006	245377	7.0 - 8.5	7.5	10.0	29.7	1929	14	699	12
245/50R20	102T	SL	BLK	166170006	245356	7.0 - 8.5	7.5	10.0	29.7	1874	14	698	12
255/50R20	109H	XL	BLK	166174006	245361	7.0 - 9.0	8.0	10.4	30.1	2271	14	689	12
255/55R20	110T	XL	BLK	166176006	245363	7.0 - 9.0	8.0	10.4	31.0	2337	14	668	12
265/50R20	107H	SL	BLK	166172006	245358	7.5 - 9.5	8.5	10.9	30.5	2149	14	680	12

Do not attempt to mount 16" rim diameter tires on 16.5" rim diameter wheels; this may result in serious injury or death.

For optimum performance, studded tires should be used in sets of four. Only new tires should be fitted with studs. Studded tires can be sold for use only where use is not prohibited by law.

For more complete information, go to Tire-HQ™ at [www.tire-hq.com](http://www.tire-hq.com) or contact your Goodyear representative.

# 2024 COOPER® OE FITMENTS

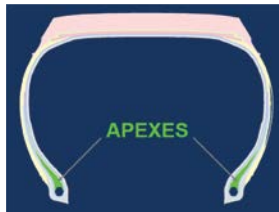
VEHICLE MAKE	VEHICLE MODEL	TIRE DESCRIPTION	PRODUCT CODE	TIRE LINE	SIDEWALL DESCRIPTION	VEHICLE MODEL YEAR
MERCEDES-BENZ	EQE SEDAN	265/35R22 102H XL	160001014	Zeon CrossRange	BLK	2022 - 2024
	EQE SUV	235/55R19 105H XL	160089023	Zeon CrossRange	BLK	2022 - 2024
		255/45R20 105H XL	160085014	Zeon CrossRange	BLK	2022 - 2024
		255/45R20 105H XL	160088022	Discoverer CrossRange	BLK	2022 - 2024
		265/35R22 102H XL	160001018	Zeon CrossRange NRT	BLK	2022 - 2024
		EQE-CLASS	265/40R21 105H XL	160004018	Zeon CrossRange NRT	BLK
	EQS SUV	265/50R20 111H XL	160086014	Zeon CrossRange	BLK	2022 - 2024
		265/50R20 111H XL	160086015	Discoverer CrossRange	BLK	2022 - 2024
		275/40R22 107H XL	160003018	Zeon CrossRange NRT	BLK	2022 - 2024
		275/45R21 107H	160002015	Discoverer CrossRange	BLK	2023 - 2024
		275/45R21 107H	160002018	Zeon CrossRange NRT	BLK	2022 - 2024
		275/45R21 107H	160002019	Discoverer CrossRange NRT	BLK	2023 - 2024
	GLE / GLS CLASS	255/50R19 107H XL	166469003	Discoverer SRX	BLK	2023 - 2024
		275/50R20 109H	166468020	Discoverer SRX	BLK	2023 - 2024
	GLE-CLASS	255/50R19 107H XL	166613003	Discoverer SRX	BLK	2024 - 2024
		275/50R20 109H	166614003	Discoverer SRX	BLK	2024 - 2024

For more complete information, go to Tire-HQ™ at [www.tire-hq.com](http://www.tire-hq.com) or contact your Goodyear representative.

# **TIRE FUNDAMENTALS**

# TIRE CONSTRUCTION

**APEX:** Rubber components that provide a transition from the bead area to the sidewall and add support for a balanced ride and enhanced handling.



**BEAD:** A round hoop of steel wires, wrapped or reinforced by steel cords, placed at the very inside of the tire's diameter to hold the tire onto the wheel rim.



**BELTS:** One or more rubber-coated plies (layers) of steel cord running circumferentially around the tire under the tread. They are designed to reinforce body plies, hold the tread flat on the road and resist damage from impacts and penetration. Belts also determine the tire's diameter and resist deformation and squirm from cornering, braking and centrifugal forces – which increases the tread life.

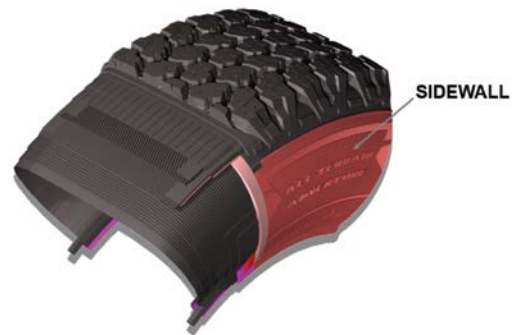
**CHAFER:** Abrasion-resistant rubber-coated material to help prevent the tire's beads from rim damage and chafing.

**LINER OR INNER-LINER:** A thin layer of rubber inside a tubeless tire that helps maintain inflation pressure in the tire.

**PLY: (PLIES):** A reinforcing member of a tire composed of layers of cord fabric and rubber that provide the strength to contain the air pressure needed to support a load and resist deflection. A ply extends from bead to bead and goes between the inner-liner and belts of tread.

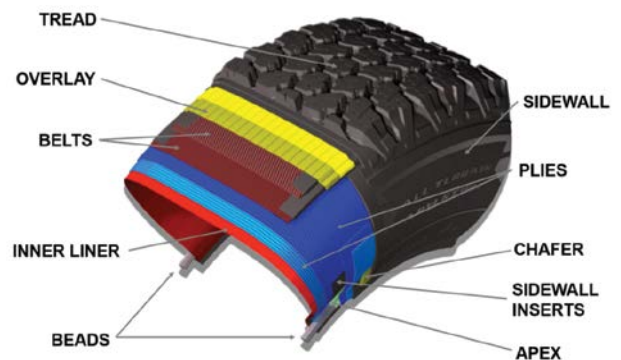


**SIDEWALL:** The portion of the tire between the bead and the tread. It is flexible to soak up bumps, yet stiff to limit tire rollover.



**TIRE CONSTRUCTION:** Term used to describe a variety of integral parts of a modern radial or bias tire.

Example tire cutaway drawing shown below. Please note: Not all tires have the same components.



# TREAD DESIGN

**ALL-SEASON TIRES:** Tires designed to provide good traction in a wide variety of road conditions, including wet, dry, mud and snow.

**ASYMMETRICAL TREAD DESIGN:** The design of the tread pattern changes from one side of the tread face to the other, in order to have two or more different types of tread patterns on one tire with an intended outboard side.



**DIRECTIONAL TREAD DESIGN:** A tire designed to rotate in only one direction to enhance water evacuation from the contact patch.

**GROOVE:** The space between two adjacent tread ribs; also called tread grooves.



**NON-DIRECTIONAL TREAD DESIGN:** A tire designed to rotate in either direction without loss in performance.

**SIPES:** Small, narrow slots molded into the ribs of the tread design that increase the traction edges of the tire and increase ability of the tire on wet pavement.

**SYMMETRICAL TREAD DESIGN:** The tread pattern is consistent in size and shape both circumferentially around the tire and laterally across the face of the tread.

**TREAD PATTERN:** The arrangement of blocks, grooves, sipes and channels designed into the tread to enhance its grip. Also called the tread design.

**WINTER TIRES (SNOW TIRES):** A winter tire is a tire with a tread design and compound made specifically for snowy and icy conditions. Identified by M&S, M+S or M/S markings on the sidewalls. Tires designed for use in severe snow conditions are further identified with a pictograph of a mountain with a snowflake on the sidewalls and must meet specific snow performance test requirements.



**WEAR INDICATOR:** Narrow bands, sometimes called "wear bars," that appear across the tread when 2/32" of tread is remaining.

**DOT TIRE IDENTIFICATION NUMBER:** The D.O.T. tire identification number (TIN) is a code that one can find on the sidewall of all tires sold in the United States. The DOT Symbol signifies that the tire complies with the applicable U.S. Department of Transportation Federal motor vehicle safety standards. The TIN identifies the manufacturer, manufacturing plant, tire size, tire type and the week and year of manufacture. Note: the last 4 digits of the TIN are referred to as the "Date Code". For example, the date code 4018 would indicate 40th week of 2018.

**LOAD CARRYING CAPACITY:** The load a particular size tire can carry at a given inflation pressure under certain driving conditions, as established by the Tire and Rim Association or other standards organization.

**LOAD RANGE:** Tire load ranges are indicated as STANDARD LOAD (SL) and EXTRA LOAD (XL) for auto tires and Load Range C, D, E, etc., for light truck tires. The load range represents the load carrying capacity of the tire at specific tire inflation pressures.

**M+S, M/S OR M & S:** A tire sidewall designation indicating that the tire meets the U.S. Tire Manufacturers Association (USTMA) definition of a mud and snow tire.

## SIDEWALL EXPLANATION

<b>B01</b> = Broken Serrated Band	<b>NW</b> = Narrow White Stripe
<b>B02</b> = Broken Serrated Band – EMT	<b>OWL</b> = Outlined White Letters
<b>BLK</b> = Blackwall	<b>RWL</b> = Raised White Letters
<b>BLT</b> = Black Letters	<b>SBL</b> = Serrated Black Letters
<b>BSL</b> = Black Serrated Letters	<b>VS</b> = Vertical Serrated Band
<b>BSW</b> = Black Sidewall	<b>XNW</b> = Extra Narrow White Stripe

## UTQG LEGEND

### Tire Grades: Uniform Tire Quality Grading System or UTQG

Except for winter, light truck and trailer tires, the Department of Transportation requires tire manufacturers to grade passenger car tires based on three performance factors: treadwear, traction and temperature resistance. The UTQG rating of each Goodyear tire is listed in this catalog.

#### Treadwear

- More than 100 – Better
- 100 – Baseline
- Less than 100 – Poorer

The treadwear grade is a comparative rating based on the wear rate of the tire when tested for 7,200 miles on a government-specified course. A tire graded 200 would wear twice as long on the government-specified course as one graded 100. (Actual tire mileage may vary.) Note: Treadwear grade is valid only for comparisons within a manufacturer's product line, not between manufacturers. For example, a 700 rating from one tire manufacturer is not necessarily better than a 600 from another.

#### Traction

- |      |     |
|------|-----|
| • AA | • B |
| • A  | • C |

Traction grades, from highest to lowest, are AA, A, B and C. They represent the tire's ability to stop on wet pavement as measured under controlled conditions on specified government test surfaces of asphalt and concrete. The traction grades are based upon "straight ahead" braking tests. They do not indicate cornering ability or resistance to hydroplaning.

#### Temperature

- A – Best
- B – Intermediate
- C – Acceptable

Temperature grades represent the tire's resistance to heat generated by running at high speed. Sustained high temperatures can cause the materials of the tire to degenerate and thus reduce tire life. Excessive temperatures can lead to tire failure. Federal Motor Vehicle Safety Standards require that all passenger tires meet at least the minimal level of performance: Grade C.

# TIRE SIZE

**ASPECT RATIO:** A term that describes a tire's height-to-width proportion. If a tire's sidewall height were 65% of its cross-section width, its aspect ratio would be 65. In the tire size expressed as 205/65R15, the number 65 is the aspect ratio. The lower the aspect ratio, the wider the tread and the shorter the sidewall.

**HIGH FLOTATION TIRES:** These light truck tires are for supporting a load on soft, yielding terrain. Size nomenclature includes outside diameter, section width, construction type, and rim diameter (e.g., 31X10.50R15LT).

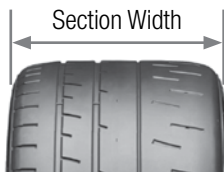
**HIGH LOAD CAPACITY TIRES:** These tires have increased load capacity compared to current Extra Load (XL) tires, at the same reference inflation pressure (290 kPa), and are designated with an "HL" preceding the size designation (e.g., HL245/40R19)

**LT-METRIC:** A sizing system using the section width in millimeters, aspect ratio, type of construction, and rim diameter in inches (e.g., LT235/85R16) and is primarily intended for service on light trucks.

**P-METRIC:** A tire with a "P" preceding the size designation identifies that it is primarily intended for service on passenger cars (e.g., P225/45R17).

**RIM DIAMETER:** The diameter of the rim bead seats that support a tire normally indicated in whole numbers in inches for passenger cars.

**SECTION WIDTH:** The distance between a tire's sidewalls measured at the widest part of the tire not including the lettering or design.



**SERVICE DESCRIPTION:** (Load Index/Speed Symbol) A speed rating system which describes the load capacity and high speed of a tire; includes numerical load indexes and alphabetical speed symbols.

**ST-METRIC TRAILER:** A tire with an "ST" preceding the size designation identifies that it is primarily intended for service on trailers (e.g., ST225/75R15).

# SPEED RATINGS\*

Speed ratings are indicated as follows:

Speed Symbol	Maximum Speed	Open-Ended Speed Category
L	120 km/h (75 mph)	
M	130 km/h (81 mph)	
N	140 km/h (87 mph)	
P	150 km/h (93 mph)	
Q	160 km/h (99 mph)	
R	170 km/h (106 mph)	
S	180 km/h (112 mph)	
T	190 km/h (118 mph)	
U	200 km/h (124 mph)	
H	210 km/h (130 mph)	
V	240 km/h (149 mph)	
W	270 km/h (168 mph)	ZR**
Y	300 km/h (186 mph)	
(Y)**	Above 300 km/h (186 mph)	

\*The Goodyear Tire & Rubber Company does not recommend the use of any of its products in excess of the legal speed limits.

\*\*Per the T&RA 2022 yearbook, for tires having a maximum speed capability above 240 kph (149 mph), a "ZR" may appear in the size designation. For tires having a maximum speed capability above 300 kph (186 mph), a "ZR" must appear in the size designation and a Service Description, including the Y Speed Symbol, must be included in brackets.

Many Goodyear tires are available in speed-rated versions to match the speed capabilities of the world's fastest cars. Generally, it is recommended that a speed-rated tire be replaced with a tire having an equivalent or greater speed rating.

However, if you never drive at speeds near the limits of your speed-rated tires, you may choose to replace them with tires having a lesser top-speed rating.

In situations where tires having different top-speed ratings are mixed on a vehicle, the maximum speed certification is limited to the top-speed certification of the tire with the lowest speed rating.

Speed ratings do not indicate how well a tire handles or corners. They only certify a tire's ability to withstand high speed.

**WARNING:** Vehicle handling, traction, ride comfort and other performance parameters may be significantly affected by a change in tire size or type. Before replacing tires, always consult and follow the vehicle owner's manual because some vehicle manufacturers prohibit changing tire size. When selecting tires that are different from the original equipment size make certain: (1) The tires have adequate load-carrying capacity based on the vehicle placard, (2) The tires have sufficient inflation pressure to carry the load and (3) There is proper clearance with no interference points between the tire and vehicle. The consumer must be aware to always drive safely and obey all traffic laws. Avoid sudden, sharp turns or lane changes. Failure to follow any of these warnings may result in loss of control of the vehicle, leading to an accident and serious injury or death.

## LOAD INDEX

**WARNING: DO NOT OVERLOAD TIRES. OVERLOADING TIRES CAN RESULT IN TIRE FAILURE, PERSONAL INJURY AND/OR DEATH.**

The load index is a numerical code associated with the maximum load a tire can carry at the speed indicated by its Speed Symbol under specified service conditions up to 210 km/h (130 mph). Check the doorjamb or owner's manual to determine the maximum vehicle load.

LOAD INDEX AND LOAD					
Load Index	Load		Load Index	Load	
	Passenger	Light Truck		Passenger	Light Truck
79	437 kg (963 lbs.)	437 kg (965 lbs.)	105	925 kg (2039 lbs.)	925 kg (2040 lbs.)
80	450 kg (992 lbs.)	450 kg (990 lbs.)	106	950 kg (2094 lbs.)	950 kg (2095 lbs.)
81	462 kg (1019 lbs.)	462 kg (1020 lbs.)	107	975 kg (2149 lbs.)	975 kg (2150 lbs.)
82	475 kg (1047 lbs.)	475 kg (1045 lbs.)	108	1000 kg (2205 lbs.)	1000 kg (2205 lbs.)
83	487 kg (1074 lbs.)	487 kg (1075 lbs.)	109	1030 kg (2271 lbs.)	1030 kg (2270 lbs.)
84	500 kg (1102 lbs.)	500 kg (1100 lbs.)	110	1060 kg (2337 lbs.)	1060 kg (2335 lbs.)
85	515 kg (1135 lbs.)	515 kg (1135 lbs.)	111	1090 kg (2403 lbs.)	1090 kg (2405 lbs.)
86	530 kg (1168 lbs.)	530 kg (1170 lbs.)	112	1120 kg (2469 lbs.)	1120 kg (2470 lbs.)
87	545 kg (1201 lbs.)	545 kg (1200 lbs.)	113	1150 kg (2535 lbs.)	1150 kg (2535 lbs.)
88	560 kg (1235 lbs.)	560 kg (1235 lbs.)	114	1180 kg (2601 lbs.)	1180 kg (2600 lbs.)
89	580 kg (1279 lbs.)	580 kg (1280 lbs.)	115	1215 kg (2679 lbs.)	1215 kg (2680 lbs.)
90	600 kg (1323 lbs.)	600 kg (1325 lbs.)	116	1250 kg (2756 lbs.)	1250 kg (2755 lbs.)
91	615 kg (1356 lbs.)	615 kg (1355 lbs.)	117	1285 kg (2833 lbs.)	1285 kg (2835 lbs.)
92	630 kg (1389 lbs.)	630 kg (1390 lbs.)	118	1320 kg (2910 lbs.)	1320 kg (2910 lbs.)
93	650 kg (1433 lbs.)	650 kg (1435 lbs.)	119	1360 kg (2998 lbs.)	1360 kg (3000 lbs.)
94	670 kg (1477 lbs.)	670 kg (1475 lbs.)	120	1400 kg (3086 lbs.)	1400 kg (3085 lbs.)
95	690 kg (1521 lbs.)	690 kg (1520 lbs.)	121		1450 kg (3195 lbs.)
96	710 kg (1565 lbs.)	710 kg (1565 lbs.)	122		1500 kg (3305 lbs.)
97	730 kg (1609 lbs.)	730 kg (1610 lbs.)	123		1550 kg (3415 lbs.)
98	750 kg (1653 lbs.)	750 kg (1655 lbs.)	124		1600 kg (3525 lbs.)
99	775 kg (1709 lbs.)	775 kg (1710 lbs.)	125		1650 kg (3640 lbs.)
100	800 kg (1764 lbs.)	800 kg (1765 lbs.)	126		1700 kg (3750 lbs.)
101	825 kg (1819 lbs.)	825 kg (1820 lbs.)	127		1750 kg (3860 lbs.)
102	850 kg (1874 lbs.)	850 kg (1875 lbs.)	128		1800 kg (3970 lbs.)
103	875 kg (1929 lbs.)	875 kg (1930 lbs.)	129		1850 kg (4080 lbs.)
104	900 kg (1984 lbs.)	900 kg (1985 lbs.)	130		1900 kg (4190 lbs.)

Note: for European-Metric passenger tires, reference "Passenger" load; for tires marked with prefixes "LT" or "ST" or suffixes "LT" or "C," reference "Light Truck" load.

**WARNING:** Vehicle handling, traction, ride comfort and other performance parameters may be significantly affected by a change in tire size or type. Before replacing tires, always consult and follow the vehicle owner's manual because some vehicle manufacturers prohibit changing tire size. When selecting tires that are different from the original equipment size, make certain: (1) The tires have adequate load-carrying capacity based on the vehicle placard, (2) The tires have sufficient inflation pressure to carry the load and (3) There is proper clearance with no interference points between the tire and vehicle. The consumer must be aware to always drive safely and obey all traffic laws. Avoid sudden, sharp turns or lane changes. Failure to follow any of these warnings may result in loss of control of the vehicle, leading to an accident and serious injury or death.

**NEVER FIT TIRES TO A VEHICLE THAT MAY HAVE LESS LOAD-CARRYING CAPACITY THAN REQUIRED BY THE ORIGINAL EQUIPMENT MANUFACTURER.**

**Examples:** Many vehicles, such as large passenger vans, require Load Range E tires as designated by the vehicle manufacturer. Fitment of a tire with less load-carrying capacity, such as Load Range D, is not allowed.

In other cases, tires of the same size may have different load index numbers in the service description. You must make certain the replacement tires fitted to the vehicle have a load-carrying capacity equal to or greater than what the original equipment manufacturer specifies.

**NOTE:** Goodyear manufactured and/or marketed European-Metric passenger tires and P-Metric passenger tires are interchangeable as long as they have the same section width, same aspect ratio, same rim diameter, and same Load Range (LL, SL or XL). Conversely, Goodyear-manufactured and/or marketed P-Metric passenger tires and European-Metric passenger tires are interchangeable as long as they have the same section width, same aspect ratio, same rim diameter, and same Load Range (LL, SL or XL).

**Caution:** Never substitute a "Standard Load" (SL) or "Light Load" (LL) tire for an "Extra Load" (XL) tire. If the vehicle was originally equipped with "Extra Load" (XL) tires, replace those tires with similar-sized XL tires.

**Caution:** In addition, never substitute a "Light Load" (LL) tire for a "Standard Load" (SL) tire. If the vehicle was originally equipped with "Standard Load" (SL) tires, replace those tires with similar-sized SL or XL tires.

**Caution:** It is recommended that a "High Load Capacity" (HLC) tire be replaced with an HLC tire of equal size and load carrying capacity.

**\*\* SAFETY WARNING \*\*** Serious injury may result from:

- Tire failure due to underinflation/overloading – follow the owner's manual or tire placard in vehicle.
- Explosion of tire/rim assembly due to improper mounting – only specially trained persons should mount tires.
- Do not spin wheels in excess of 35 mph as indicated on the speedometer. Personal injury and severe damage may result from excessive wheel spinning, including tire disintegration or axle failure.

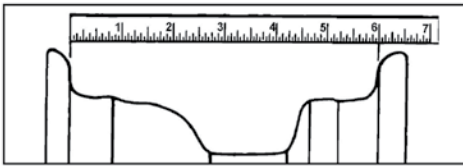
# TIRE TERMINOLOGY

**CROSS-SECTION WIDTH:** External sidewall-to-sidewall measurement of inflated tire, exclusive of ornamental ribs and lettering. Sometimes called section width.

**FOOTPRINT:** The area of the tire's tread that is in actual contact with the ground. The mark left by a loaded tire's tread as it comes into contact with the road surface.

**ORIGINAL EQUIPMENT (O.E.):** Refers to tires sold to automobile manufacturers for equipping their new cars.

**RIM WIDTH:** Distance between two opposite, inside edges of the rim flanges.



**ROLLING RESISTANCE:** The force required to keep a tire moving at a constant speed. The lower the rolling resistance, the less energy needed to keep a tire moving.

**ROTATION:** The systematic movement of tires from one vehicle position to another to maximize tread life and minimize irregular wear.

**SECTION HEIGHT:** The height of a tire measured from the rim to the outer tread in an unloaded tire.



**TREAD DEPTH:** The distance from the tread surface to the bottom of the grooves.

**UNIFORMITY:** A term describing the amount of radial and lateral force variation in a tire.

